

# Soup Kettle Instruction Manual

Model: SB-6000/SB-6000S/SB-6000SL



**Please read this instruction manual carefully before operation**

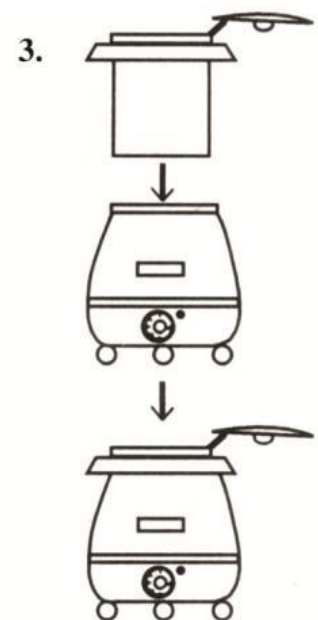
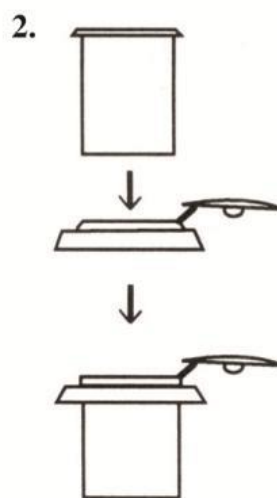
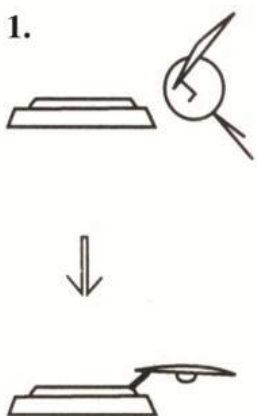


# Safety Guidelines

- Keep out of reach of children.
- Never leave the device unattended during its operation.
- The device is not designed for operation with an external timer switch or a remote control.
- Only a qualified technician and using original spare parts and accessories should carry out repairs and maintenance of the device.
- Do not attempt to repair the device yourself, it may void your warranty.
- Do not use any accessory or spare parts that have not been recommended by the manufacturer. This can be dangerous for the user or lead to damage of the device or personal injury.
- To prevent hazards and to ensure optimum efficiency, no modifications or alterations to the device that are not explicitly approved by the manufacturer may be undertaken.

## **Warning:**

- NEVER IMMERSE KETTLE WATER AS THIS WILL RESULT IN DAMAGE TO THE UNIT, VOIDING ANY VALID WARRANTIES.
- THIS APPLIANCE **MUST** BE EARTHED.
- DO NOT OPERATE WHEN EMPTY.



# Operation Instructions

## INSTRUCTIONS FOR THE WET HEAT SOUP KETTLE:

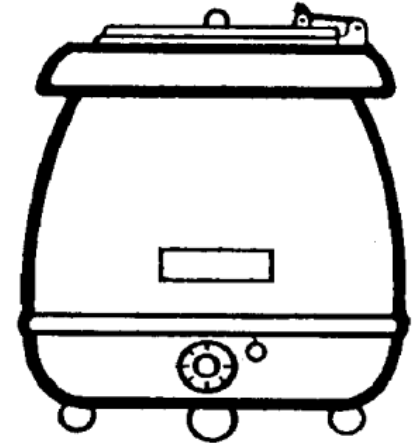
Specification:

Capacity : 10L

Voltage : 220V-240V/50HZ 400-475W

Weight : 4.8Kgs

Dimensions: (H): 39cm (D): 34.5cm



## Operating and Maintenance:

- Plug unit into correct electrical socket.
- Use with **WET HEAT ONLY.**
- Add 0.6L of water between the stainless steel liner and the internal aluminum container. Never overfill with water and under no circumstances should the stainless steel liner float up, even when empty. Remove any excess water immediately.
- The temperature control should be set between 1 and 8 and always operate the kettle at the lowest setting to maintain correct serving temperature. Hold at the high temperature when setting between 8 and 12.
- A neon light will glow when the unit is turned on. Turn the dial to 0 to switch off.  
Unplug from the wall socket to isolate kettle from the electrical supply.
- Always keep the removable hinged lid attached and in the closed position when not serving.
- Never move or carry the kettle when unit is switched on, or containing hot food.
- Spilled food should be removed immediately from all exterior surfaces. The stainless steel bain marie and lid are machine washable. The painted exterior and top collar should be wiped over with a damp soapy cloth.
- Ensure unit is unplugged when not in use, when filling and when being cleaned.
- The kettle must not be cleaned with a high pressure jet.

# Cleaning & Maintenance

## **Cleaning:**

- After each use, wash the inner and outer pots and the carrying ring, as food, spices and salt are aggressive and may damage the device.
- Set the temperature dial to "0" and remove the device's plug from its socket. Wait for the device to cool.
- Remove the inner pot. Wash the lid, carrying ring and inner pot with a soft cloth and mild cleaning agent.
- Only empty the outer pot when the remaining water has cooled, otherwise there is a risk of burns!
- Wipe the outer pot on the inside and outside with a soft, moist cloth.
- Next, dry all washed parts thoroughly.
- If the device is to be washed, transported or remain unused for a longer period of time, empty it.
- Always use a soft cloth and never use coarse cleaning agents that could damage or scratch the surfaces of the device.
- After cleaning dry and polish the surface with dry cloth.

## **Waste disposal:**

At the end of its service life, the device has to be disposed in accordance with the national regulations. It is advisable to contact a company which specialises in waste disposal, or just contact the local disposal service in your community.

**WARNING!** Please make the device unfit for use before disposal. For that purpose, disconnect the device from the mains supply and remove the mains connection cable from the device.

**CAUTION!** For the disposal of the device please follow the local regulations and rules.

# Warranty

**WARRANTY** Hamoki Ltd warrants the original purchaser of every new product (under normal and proper use and maintenance service as specified by Hamoki Ltd and upon proper installation and start-up in accordance with the instruction packet supplied with each unit) a one year parts warranty.

Hamoki Ltd's obligation under this warranty is limited to a period of one (1) year from the date of original installation.

## **WARRANTY CLAIMS:**

All claims for parts must be made **directly through the retailer** in the first instance. All claims raised with the retailer should include:

Your name:

Model number:

Your company:

Serial number of the product:

Address: Date of purchase:

Email: Proof of purchase :

Phone:

Information supporting the alleged defect.(A video/photo)

Photo of the dataplate.