

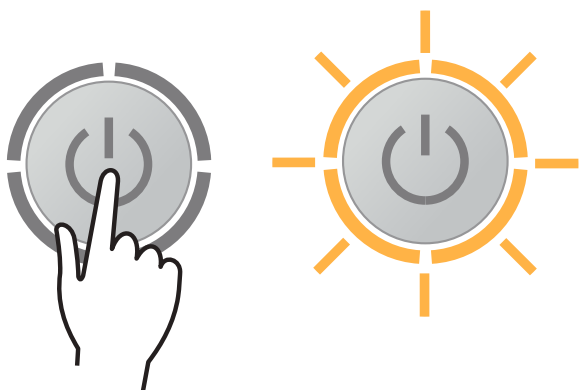
D400 D500  
G350 G400 G500

# Undercounter Dishwasher/Glasswasher

## Quick User Guide

### 1 Turning the dishwasher on

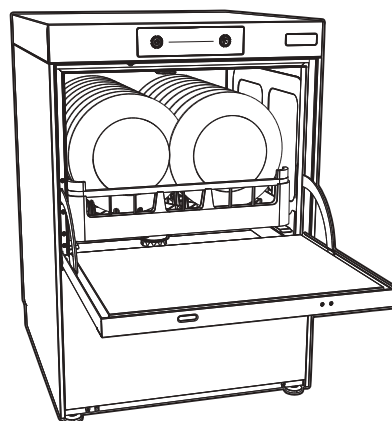
Push the On/Off button, the button will flash amber to indicate pre-heating and water filling of the machine. You can continue to prepare the machine whilst this process occurs.



### 2 Loading the dishwasher

Open the door to load the items. Before loading, ensure debris is rinsed from the items. Once complete, close the door.

 See the User Manual for loading information.



### 3 Dishwasher starts cycle

Once the required temperature and water cycle is complete, the amber indicator will illuminate green and your program will start.



### 4 Selecting a wash programme

Your machine has one possible program time that is pre-set to offer the best possible results. These times are as follows:

- Dishwasher – 3min
- Glasswasher – 2min

Your machine has a heat interlock to ensure that the rinse is in accordance with environmental health requirements. A recovery time may be experienced between cycles to get back to this interlock temperature indicated by the flashing amber heating indicator. For full information on operating temperatures and the interlock, please refer to the latest version of the Engineers Manual on the Classeq website for full information regarding temperatures and interlock settings.

### 5 Confirming your selection

Cycle indicator will illuminate blue to show a program selection has been made.



**CLASSEQ**

D400 D500  
G350 G400 G500

# Undercounter Dishwasher/Glasswasher

Quick User Guide

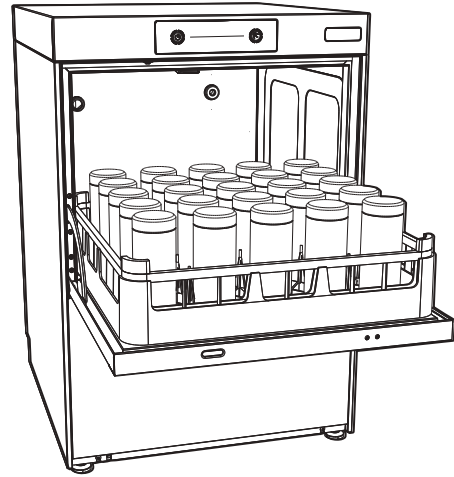
## 6 Loading the glasswasher

Open the door to load the glasses.

Glasses should be placed in the Open Basket open end down.

Always try to fill the Basket - to prevent glasses clinking against each other during a wash cycle.

With tall glasses always check carefully that they fit in the glasswasher when stood upright in the Open Basket.



## 7 Daily draining and cleaning

The machine must be drained down at the end of each working day.

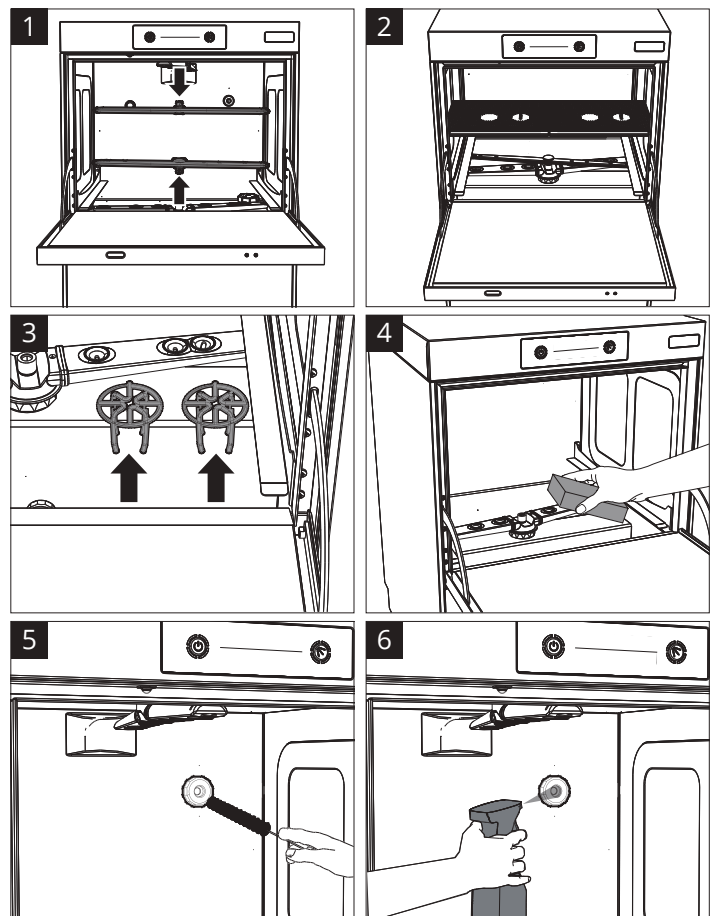


See the User Manual for draining instructions.

The interior of the machine should be cleaned after each service when the machine is drained down.

- Remove and clean the top and bottom Rinse and Wash Arms (1).
- Remove and clean the Primary Filters (2).
- Remove and clean the Secondary Filters (3).
- Clean the interior of the Wash Tank with a sponge (4) and/or brush for all apertures and outlets (5).
- Clean around the Door Hinge.
- Use a trigger spray bottle with a jet nozzle to spray the ball in the anti-syphon device with clean water (pumped drain machines only) (6).
- If required apply food grade grease to the Door Ball Catch.
- Leave the door open over night to let the machine air dry.

Ensure all arms and filters are refitted to the machine before turning it on.



# CLASSEQ