

# *robot* *coupe*®



**New**  
Register  
your product  
on line

**CMP 250 V.V. • CMP 300 V.V. • CMP 350 V.V.  
CMP 400 V.V. • CMP 250 Combi • CMP 300 Combi**

# www.robot-coupe.com

## @ Register your product on line

The screenshot displays the Robot-Coupe website's support section. At the top, the navigation bar includes the company logo, links for 'The company', 'Contact us', and 'Restricted Area', and a 'Select your country...' dropdown. Below this, a menu contains 'CATALOGUE', 'SELECTION GUIDE', 'LEAFLETS', 'VIDEOS', 'OUR', and 'SUPPORT' (the latter is circled). A search bar is also present. The main content area is titled 'SUPPORT' and is divided into two columns. The left column, 'Register your product online', provides instructions and a list of required information: product serial number and purchase date. A 'Register my product now' button is circled at the bottom of this column. The right column, 'Access the Robot-Coupe after-sales service', features an 'Authentication' form with fields for 'Identifiant', 'Mot de passe', and 'Email', along with a 'Mot de passe perdu' link. A 'Pour nous contacter' link is also visible. An 'Access the Robot-Coupe after-sales service' button is located at the bottom of this column.

# robot coupe®

## DECLARATION OF CONFORMITY

Declares that the machines identified by their type above, comply with:

- The essential requirements of the following European directives and with the corresponding national regulations:
  - Directive «Machinery» 2006/42/EC,
  - Directive «Low voltage» 2014/35/EU,
  - Directive «Electromagnetic compatibility» 2014/30/EU,
  - Regulation (EC) n°1935/2004 «Materials and articles intended to come into contact with food»,
  - Regulation (EU) n°10/2011 «Plastic materials and articles intended to come into contact with food»,
  - Directive 2011/65/EU of the European Parliament and of the Council of 8 June 2011 on the restriction of the use of certain hazardous substances in electrical and electronic equipment. Text with EEA relevance,
  - Directive «WEEE» 2012/19/EU.
- The requirements of the European harmonized standards and with the standards specifying the hygiene and safety requirements:
  - EN ISO 12100: 2010: Safety of machinery – General principles for design,
  - EN 60204-1 -2006: Safety of machinery – Electrical equipment of machines,
  - EN 12852: Food Processors and Blenders,
  - EN 1678-1998: Vegetable Cutting Machines,
  - EN 454 + A1 2010-02: Blender-Mixers,
  - EN 12853: Hand-held Blenders and Whisks (stick blenders),
  - EN 14655: Bread Slicers,
  - EN 13208: Vegetable Preparation Machines,
  - EN 13621: Salad Spinners,
  - EN 60529-2000: Degrees of protection,
    - IP 55 for the electrical controls,
    - IP 34 for the machines.

Montceau en Bourgogne on 9 March 2017

Alain NODET  
Industrial Director



# SUMMARY

## ■ WARRANTY

## ■ IMPORTANT WARNING

## ■ INTRODUCTION TO YOUR NEW POWER MIXER

## ■ SWITCHING ON THE APPLIANCE

- Advice on electrical connections

## ■ OPERATING THE APPLIANCE

- Starting and stopping the power mixer
- Continuous operation
- Variable-speed operation

## ■ WORKING POSITION

- Blade function
- Whisk function

## ■ ASSEMBLING & DISMANTLING

- Blade function
- Whisk function

## ■ USES & EXAMPLES

## ■ HYGIENE

## ■ CLEANING

- Motor unit
- Foot and bell
- Blades
- Whisk holder
- Whisks

## ■ MAINTENANCE

- Blades
- Whisks
- Foot seal
- Seal ring

## ■ TECHNICAL SPECIFICATIONS

- Weight
- Dimensions
- Working height
- Noise level
- Electrical data

## ■ SAFETY

## ■ PROBLEMS

## ■ STANDARDS

## ■ TECHNICAL DATA

- Exploded views
- Electric and wiring diagrams

# ROBOT-COUCPE S.N.C., LIMITED WARRANTY

Your new ROBOT-COUCPE appliance is warranted to the original buyer for a period of one year from the date of sale if you bought it from ROBOT-COUCPE S.N.C.

If you bought your ROBOT-COUCPE product from a distributor your product is covered by your distributor's warranty (Please check with your distributor terms and conditions of the warranty).

The ROBOT-COUCPE S.N.C. limited warranty is against defects in material and/or workmanship.

## THE FOLLOWING ARE NOT COVERED BY THE ROBOT-COUCPE S.N.C. WARRANTY:

**1** - Damage caused by abuse, misuse, dropping, or other similar damage caused by or resulting from failure to follow assembly, operating, cleaning, user maintenance or storage instructions.

**2** - Labour to sharpen and/ or replacements for blades which have become blunt, chipped or worn after a normal or excessive period of use.

**3** - Materials or labour to replace or repair scratched, stained, chipped, pitted, dented or discoloured surfaces, blades, knives, attachments or accessories.

**4** - Any alteration, addition or repair that has not been carried out by the company or an approved service agency.

**5** - Transportation of the appliance to or from an approved service agency.

**6** - Labour charges to install or test new attachments or accessories (i.e., bowls, discs, blades, attachments) which have been arbitrarily replaced.

**7** - The cost of changing direction-of-rotation of three-phase electric motors (Installer is responsible).

**8** - SHIPPING DAMAGES. Visible and latent defects are the responsibility of the freight carrier. The consignee must inform the carrier and consignor immediately, or upon discovery in the case of latent defects.

KEEP ALL ORIGINAL CONTAINERS AND PACKING MATERIALS FOR CARRIER INSPECTION.

Neither ROBOT-COUCPE S.N.C. nor its affiliated companies or any of its distributors, directors, agents, employees, or insurers will be liable for indirect damage, losses, or expenses linked to the appliance or the inability to use it.

The ROBOT-COUCPE S.N.C. warranty is given expressly and in lieu of all other warranties, expressed or implied, for merchantability and for fitness toward a particular purpose and constitutes the only warranty made by ROBOT-COUCPE S.N.C. France.

# IMPORTANT WARNING



**WARNING:** In order to limit accidents such as electric shocks or personal injury, and in order to limit material damage due to misuse of the appliance, please read these instructions carefully and follow them strictly. Reading the operating instructions will help you get to know your appliance and enable you to use the equipment correctly. Please read these instructions in their entirety and make sure that anyone else who may use the appliance also reads them beforehand. Our equipment is designed for professional use and must not be used by children under any circumstances.

## UNPACKING

- **WARNING** - some of the tools are very sharp e.g. blades, etc..

## INSTALLATION

- We recommend that you install your appliance on its wall frame.

## CONNECTION

- Always check that your mains supply corresponds to that indicated on the identification plate on the motor unit and that it can withstand the amperage.
- Never plug your appliance into the mains supply before placing it inside the preparation bowl.

## HANDLING


- Always take care when handling the blades, as they are extremely sharp.

## ASSEMBLY PROCEDURES

- Follow the various assembly procedures carefully (see page 7) and make sure that all the attachments are correctly positioned.

## USE

- Never try to override the safety systems.
- Never insert an object into the preparation.
- Never switch the appliance on unless it has been placed in the preparation bowl.
- Before dismantling the foot, bell or whisk always check that the power mixer is unplugged.
- We recommend that you tilt the appliance at a slight angle to prevent the bell from touching the bottom of the container.

 **WARNING**

**Procedure to follow if the stick blender is accidentally immersed during use.**

- 1) ***Do not touch either the power mixer, the bowl or the work surface.***
- 2) ***Unplug the mixer's power cord from the wall socket.***
- 3) ***Remove the power mixer from the preparation.***
- 4) ***Tilt the power mixer to drain off as much liquid as possible.***
- 5) ***Do not switch the power mixer back on, as there is still a risk of electrocution.***
- 6) ***Send the power mixer to a Robot-Coupe approved after-sales service to have the electrical components cleaned and dried.***

## CLEANING

- As a precaution, always unplug your appliance before cleaning it.
- Always clean the appliance and its attachments at the end of each cycle.
- Never immerse the motor unit in water.
- For parts made from aluminum, use cleaning fluids intended for aluminum.
- For plastic parts, do not use detergents that are too alkaline (e.g., containing too much caustic soda or ammonia).
- Robot-Coupe can in no way be held responsible for the user's failure to follow the basic rules of cleaning and hygiene.

## MAINTENANCE

- Before opening the motor housing, it is absolutely vital to unplug the appliance.
- Check the seals and washers regularly and ensure that the safety devices are in good working order.
- It is particularly important to maintain and check the attachments since certain ingredients contain corrosive agents, e.g. citric acid.
- Never operate the appliance if the power cord or plug has been damaged or if the appliance fails to work properly or has been damaged in any way.
- Do not hesitate to contact your local Maintenance Service if something appears to be wrong.

## INTRODUCTION TO YOUR NEW POWER MIXER

Robot-Coupe has developed a whole range of power mixer. Their technical characteristics are shown in the table below.

| Models        | Speed variation | Mixer attachment | Whisk attachment | capacity Litres |
|---------------|-----------------|------------------|------------------|-----------------|
| CMP 250 V.V.  | ●               | 250 mm           |                  | 15              |
| CMP 300 V.V.  | ●               | 300 mm           |                  | 30              |
| CMP 350 V.V.  | ●               | 350 mm           |                  | 45              |
| CMP 400 V.V.  | ●               | 400 mm           |                  | 73              |
| CMP 250 Combi | ●               | 250 mm           | 220 mm           | 15              |
| CMP 300 Combi | ●               | 300 mm           | 220 mm           | 30              |

These models are working tools that are perfectly suited to the needs of their users. **The mixer function** will allow you to make soups, vegetable purées and pulps without any problem, while you will find that the **whisk function** is ideal for making pancake batter, mayonnaise, beaten egg whites, chocolate mousse, butter sauces, whipped cream or smooth fromage frais.

The whisk attachment is equipped with a metallic gear box with a plastic body, even more resistant when processing preparations such as pan cakes.

The **variable-speed** function will enable you to adjust the speed to suit each preparation and to start the processing at a lower speed in order to reduce splashing.

The simple design of these appliances allows the assembly and dismantling of the moving parts in no time at all, to ease maintenance and cleaning.

These instructions contain important information that will enable you to extract the greatest return on your investment.

**We therefore strongly advise you to read these instructions carefully before using the appliance.**

## SWITCHING ON THE APPLIANCE

### • ADVICE ON ELECTRICAL CONNECTIONS

**This class II appliance (double insulation) requires a single-phase alternating current but does not need an earthed socket. The universal-type motor is fitted with an interference suppressor.**

**The power supply must be protected by a differential circuit breaker and a 10 A fuse.**

**Check that you have a standard 10/16 A single-phase socket.**

**Make sure that the voltage of your power supply matches that shown on the identification plate of your appliance.**

Robot-Coupe supplies these models with different types of motors:

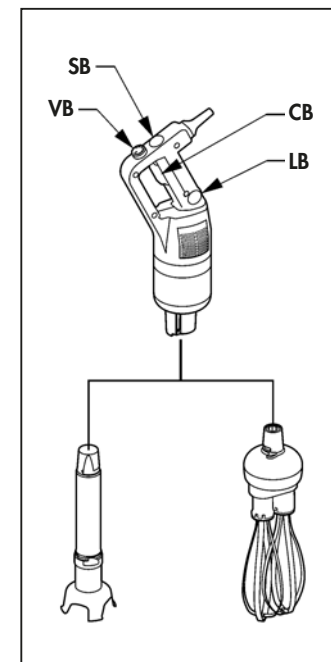
- 230 V / 50 Hz for power supplies of: 220 to 240 V.
- 120 V / 60 Hz.
- 220 V / 60 Hz.

The power mixer is supplied with a single-phase plug connected to a power cord.

## OPERATING THE APPLIANCE

### • STARTING AND STOPPING THE POWER MIXER

1. Check that the control button (CB) is in the released position.
2. Connect the power mixer to the power supply.
3. Insert the foot into the preparation.
4. Press and hold down the safety button (SB).
5. Press the control button (CB), and the power mixer will start up.
6. Release the safety button (SB).
7. To stop the power mixer, release the control button (CB).



### • CONTINUOUS OPERATION

Follow steps 1 to 6 above, then:

7. While the control button (CB) is in the depressed position, press the locking button (LB)
8. Release the control button (CB).
9. Release the locking button (LB), and the power mixer will function continuously.
10. To stop the power mixer, press and release the control button (CB).

### • VARIABLE-SPEED OPERATION

Follow steps 1 to 6 above, then:

7. Change the speed of the motor by turning the variable speed button (VB) towards the maximum or minimum as required.

**Whisk function** : speed between **500** and **1,800** rpm.

**Mixer function** : speed between **2,300** and **9,600** rpm.

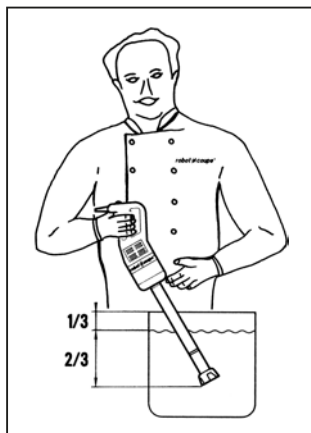
It is advisable to start at a low speed when using the whisk.

**With the self-regulating speed system**, once you have selected a speed, it will remain constant, even if the consistency of your mixture changes.

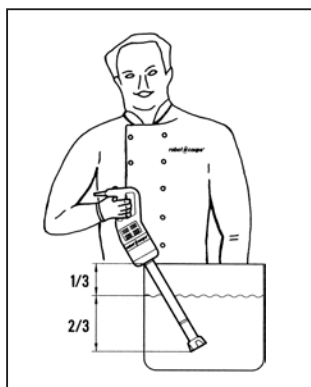
## WORKING POSITION

### • BLADE FUNCTION

For greater control, we recommend that you hold the power mixer by the handle and the bottom of motor unit. Furthermore, we recommend that you tilt the power mixer at a slight angle to prevent the bell from touching the bottom of the container.



The power mixer can equally be rested against the rim of the container, but must be tilted, and the bell must not touch the bottom of the container.



Always make sure that the bell is sufficiently immersed to avoid splashing and that the air vents of the motor unit does not come into contact with any liquid.

For optimum efficiency, two thirds of the foot should be immersed in the preparation.

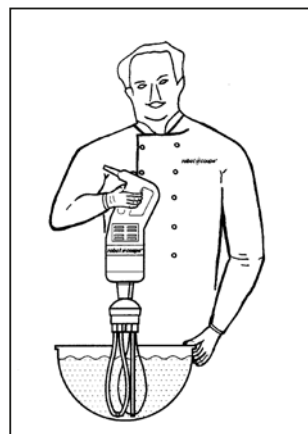
### • WHISK FUNCTION

You can also hold the appliance by the handle with one hand, leaving the other hand free to hold the bowl, if necessary.



While you process the preparation, we recommend that you move the whisks around in the bowl, in order to ensure that the mixture is completely homogeneous.

We strongly advise you to keep the whisks from touching the sides of the bowl. For maximum efficiency, at least one-fifth of the whisk length should be immersed. We also strongly advise you to start the processing at a low speed.

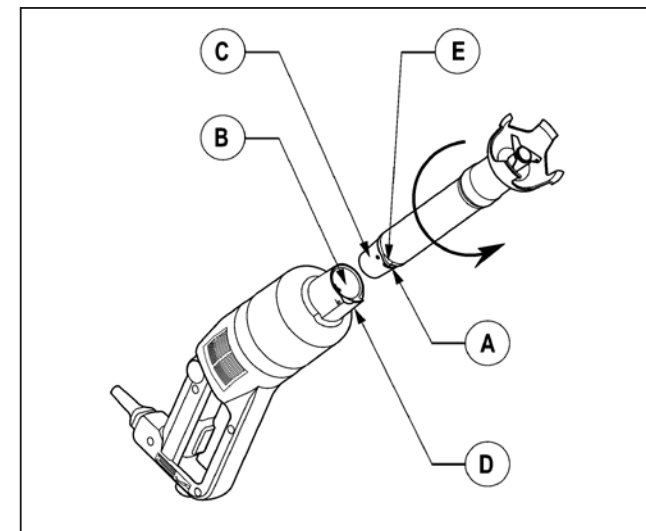


## ASSEMBLING & DISMANTLING

### • BLADE FUNCTION

#### Attaching the tube to the motor unit. (only for CMP Combi)

- Check that the appliance is not plugged in.
- Align the flat side of (A) the conical part of the tube with catch (B) into the aluminium casing.
- Insert the whole of the conical part (C) of the tube into the aluminium casing.
- Turn the tube in the direction of the arrow (see figure) until it is locked into place moderately tightly.

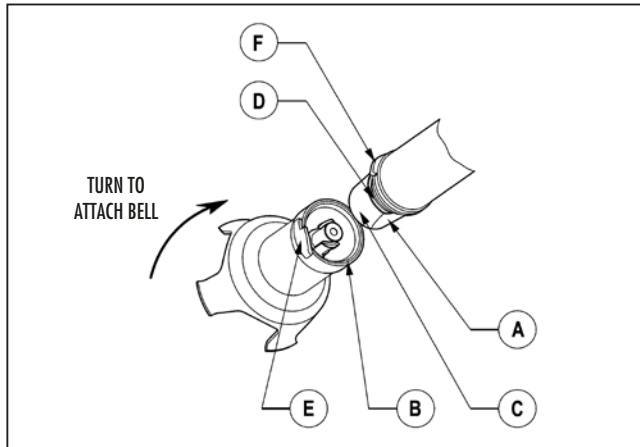


#### Removing the tube from the motor unit (only for CMP Combi)

- Check that the appliance is unplugged.
- Turn the tube in the opposite direction to that used when attaching it.
- When it will go no further, remove the tube of the aluminium casing.

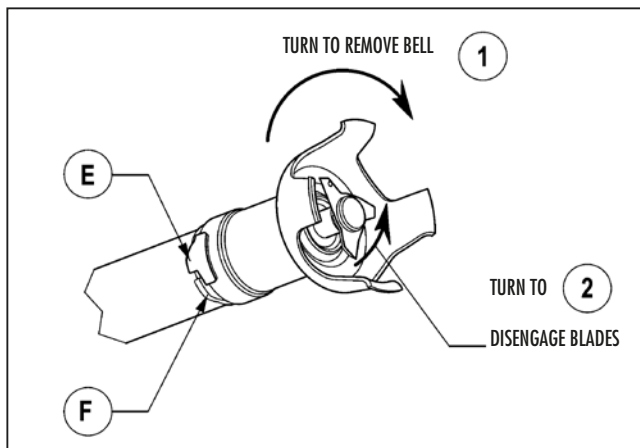


## Attaching the bell from the tube

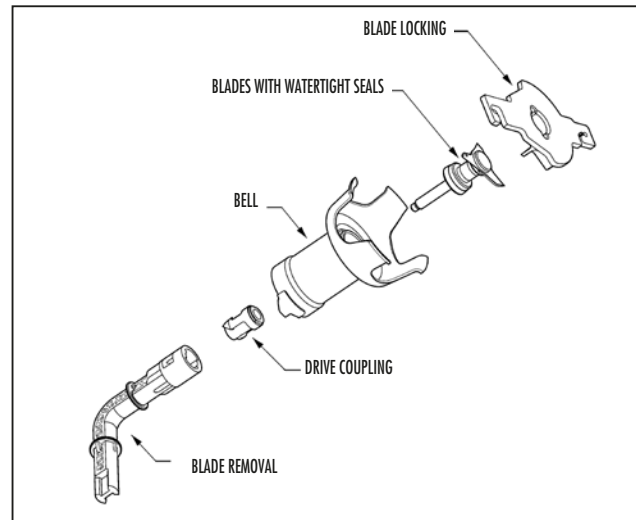


- Check that the machine is not plugged in.
- Align the flat side of (A) the conical part of the tube with catch (B) the inside of the bell.
- Insert the conical part (C) into the bell. With the washer touching the tube seal (D), turn the bell in the direction of the arrow (see above figure) to lock the bell lug (E) and tube lug (F) together moderately tightly.

## Removing the bell from the tube



- Check that the machine is not plugged in.
- Turn the bell in the direction of arrow ① (see next figure) to separate the bell lug (E) from the tube lug (F). Remove the bell.
- If jammed, turn the blades inside the bell in the direction of arrow ② to disengage them from the drive shaft.



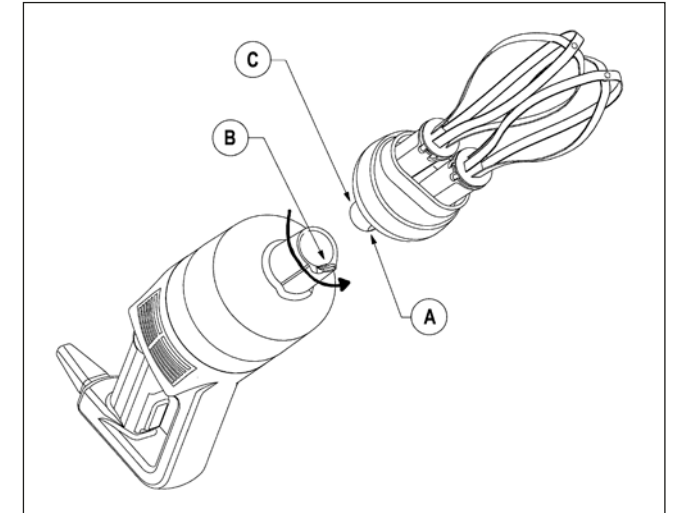
## Removing the blade

- To remove the blade safely, hold them with the tool provided or an oven glove or a thick cloth.
- Using the removal tool, unscrew the drive coupling.
- As soon as the drive coupling has been unscrewed, the blade can be removed for cleaning.

## • WHISK FUNCTION (only for CMP Combi) Attaching the whisk holder to the motor unit.

- Check that the machine is not plugged in.
- Align the flat side (A) of the conical part (C) of the whisk holder with the catch (B) on the inside of the aluminium casing.

- Insert the whole of the conical part (C) of the whisk holder into the aluminium casing.
- Turn the whisk holder in the direction of the arrow (see figure) until it is locked into place moderately tightly.



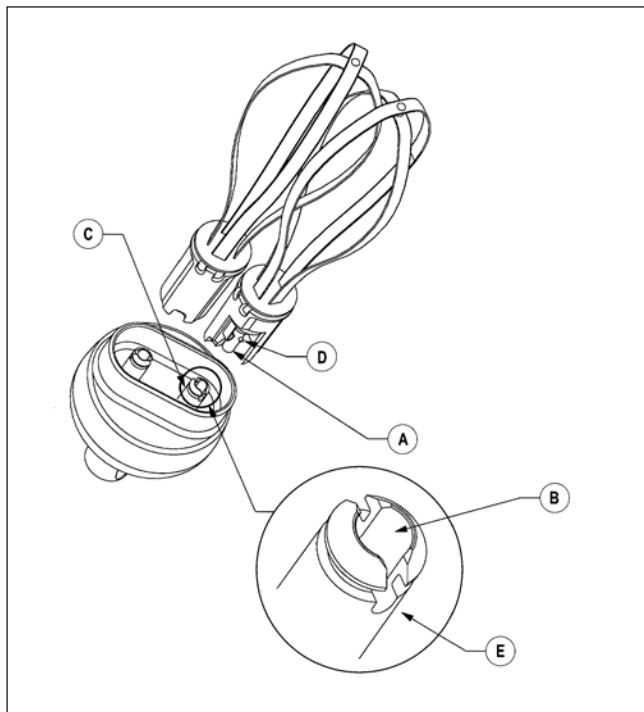
## Removing the casing

- Check that the machine is not plugged in.
- Turn the whisk holder in the opposite direction to that used when attaching it.
- When it will go no further, remove the whisk holder from the aluminium casing.

## Fitting the whisks into the whisk holder

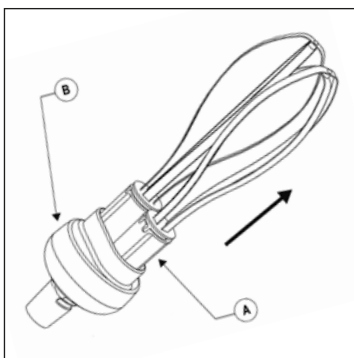
- Grasp the holder in one hand.
- With the other hand, take the first whisk and insert the shaft (A) into the bore (B) of the whisk holder drive shaft. Make sure the drive lugs (D) are properly aligned with the notches.
- As you push the whisk into the whisk holder drive shaft (C), rotate it slightly in order to slot the drive lugs into the notches (D) of the drive shaft (C), thereby locking the whisk into place inside the shaft.

- To check that the whisk is properly fixed inside the shaft ③, gently tug the metal wires.
- Repeat this procedure with the second whisk. If you cannot push it in properly, remove it, rotate it 90° and start again.

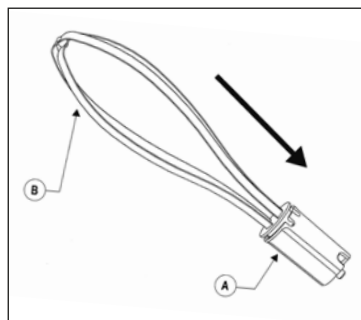


### Removing the whisks from the whisk holder

Pull the ejector ① in direction to the arrow, gripping the ejector in one hand and the holder ② in the other.



### Removing the ejector



- Hold the whisk by the wires ② in one hand.
- With the other hand, pull the ejector ① in the direction of the arrow (see figure).

The foot, the blades and the whisks can be entirely dismantled, (Robot-Coupe's exclusive patented system), thereby ensuring easy cleaning, perfect hygiene and simple maintenance.

### USES & EXAMPLES

The mixer function makes it possible to carry out all types of processing in the minimum of time, while the whisk function enables you to whisk and mix the preparation. We thus recommend that you supervise all food preparations carefully in order to obtain the best results.

### CATERING AND RESTAURANT WORK

#### Blade Function

- Soups
- Vegetable purees : carrots, spinach, celery, turnips, French beans, etc.
- Mousses : vegetable, fish
- Fruit compotes
- Sauces : green, rouille, remoulade, cream emulsions, tomato or parsley
- Bisques : langoustines and shellfish
- Pancake batter

#### Whisk function

- Mashed potatoes (fresh or instant).
- Pancake batter
- Mayonnaise
- Beaten egg whites
- Chocolate mousse
- Butter sauces
- Whipped cream
- Smooth fromage frais
- Mashed potato (fresh or instant)

### CHEMICAL & PHARMACEUTICAL LABORATORY WORK

- Mixing : making ointments, creams, paste..., emulsions.

### HYGIENE

The equipment must be clean at all stages of production.

It is vital to clean the power mixer thoroughly between each job using a detergent or disinfectant.

#### • N.B. NEVER USE PURE BLEACH

- Dilute the detergent/disinfectant following the manufacturer's instructions on the label.
- Scrub well if necessary.
- Leave the disinfectant/detergent to take effect if necessary.
- Rinse thoroughly.
- Dry properly using a clean cloth.

### CLEANING



### WARNING

As a precaution, always unplug your appliance before cleaning it (risk of electrocution).



## WARNING

The inside of the bell must not contain any liquid or food matter besides condensation.

If any liquid or food matter should get inside the bell, you must:

- Change the ring / blade assembly (Ref. 89054),
- Clean and disinfect the bell and the end of the foot to avoid all risk of contamination.

After each use:

- It is important to detach the bell to eliminate any condensation and ensure no food matter has seeped inside. To eliminate condensation, simply leave the bell detached until it dries.
- When cleaning the bell and the end of the foot, we recommend using a mild detergent.

After using the power mixer in a hot preparation, cool the bottom of the foot in cold water before dismantling the bell from the foot.

After completion of preparation, clean immediately to prevent food from sticking to surfaces.

### • MOTOR UNIT

Never put the motor unit and its handle in water, clean them with a damp cloth or a sponge.

### • FOOT AND BELL

It is possible to proceed in two ways:

#### • Simple cleaning procedure

- Place the foot and bell into a suitable container with water and switch on for a few seconds to clean the bell and the foot.
- After unplugging the appliance - essential -, making sure that no water finds its way into the foot, detach the bell from the foot to avoid a build-up of condensation.

Complete cleaning procedure, to be performed regularly based on frequency of use.

- Unplug the power mixer.
- Remove the bell from the foot.
- Disassemble the different parts of the bell, being careful to avoid damaging the blade shaft surfaces and cartridge gaskets. Clean each part with a mild detergent.
- Ensure that all the different parts are thoroughly dried before reassembly.
- Immerse the foot, detached from the bell, in a mild detergent solution for one minute. Rinse and let dry before re-attaching the bell.

### • BLADES

The blades can be removed from the bell for thorough cleaning.

Always dry the blades thoroughly after cleaning to avoid spotting.

### • WHISK HOLDER

Never immerse the whisk holder in water. Clean it with a slightly damp cloth or sponge.

Never clean the whisk holder in a dishwasher.

### • WHISKS

The whisks can be cleaned either by hand or in a dishwasher.

To ensure effective cleaning, we advice you to remove the whisk ejector.



## IMPORTANT

Check that your detergent is suitable for cleaning plastic parts. Some washing agents are too alkaline (e.g. high levels of caustic soda or ammonia) and totally incompatible with certain types of plastic, causing them to deteriorate rapidly.

## MAINTENANCE

### • BLADES

The performance of the cut essentially depends on the state of your blades and their wear. The blades are subject to wear and as such need to be replaced from time to time to ensure the consistent quality of the end product.

You are also advised to change, at the same time, the washer and the watertight seals.

### • WHISKS

The success of your preparation will depend essentially on the state of the metal wires and their amount of wear and tear. They should therefore be replaced from time to time in order to ensure optimum quality of the finished product.

### • FOOT SEAL

In order to maintain a perfect watertight seal between the foot and the bell it is necessary to check the wear of the seal regularly and replace it if necessary.

### • WASHER

The washer can be greased using a suitable food safe lubricant.

In order to maintain a perfect watertightness it is necessary to check the wear of the washer, and if necessary, to replace it.



## WARNING

**From time to time, check:**

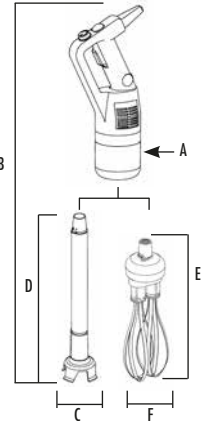
- The state of the 3 buttons' watertight membranes. Even the tiniest cracks will allow liquid to seep in.
- The state of the blender housing. This, should not show any signs of cracking or any abnormal openings which could allow access to the live components.

## TECHNICAL SPECIFICATIONS

### • WEIGHT

|               | Net    | Gross  |
|---------------|--------|--------|
| CMP 250 V.V.  | 3.1 kg | 3.7 kg |
| CMP 300 V.V.  | 3.2 kg | 3.8 kg |
| CMP 350 V.V.  | 3.5 kg | 4.0 kg |
| CMP 400 V.V.  | 3.6 kg | 4.1 kg |
| CMP 250 Combi |        |        |
| with mixer    | 3.2 kg | 5.4 kg |
| with whisk    | 3.4 kg |        |
| CMP 300 Combi |        |        |
| with mixer    | 3.4 kg | 5.5 kg |
| with whisk    | 3.4 kg |        |

### • DIMENSIONS (in mm)



|     | CMP 250 V.V. | CMP 300 V.V. | CMP 350 V.V. |
|-----|--------------|--------------|--------------|
| A = | 94           | 94           | 94           |
| B = | 610          | 660          | 718          |
| C = | 90           | 90           | 90           |
| D = | 255          | 305          | 363          |

|     | CMP 400 V.V. | CMP 250 Combi | CMP 300 Combi |
|-----|--------------|---------------|---------------|
| A = | 94           | 94            | 94            |
| B = | 763          | 640           | 700           |
| C = | 90           | 90            | 90            |
| D = | 413          | 300           | 350           |
| E = |              | 390           | 390           |
| F = |              | 120           | 120           |

### • WORKING HEIGHT

We recommend that you ensure that the container is placed on a stable and solid work surface.

### • NOISE LEVEL

The equivalent continuous sound level when the foot is not immersed in anything is less than 70 dB (A).

### • ELECTRICAL DATA

Single-phase machine

CMP 250 V.V. / CMP 250 Combi

| Motor       | Mixer Speed (rpm) | Whisk Speed (rpm) | Intensity (Amp.) |
|-------------|-------------------|-------------------|------------------|
| 230 V/50 Hz | 2,300 to 9,600    | 500 to 1,800      | 1.4              |
| 120 V/60 Hz | 2,300 to 9,600    | 500 to 1,800      | 2.6              |
| 220 V/60 Hz | 2,300 to 9,600    | 500 to 1,800      | 1.3              |

Single-phase machine

CMP 300 V.V. / CMP 300 Combi

| Motor       | Mixer Speed (rpm) | Whisk Speed (rpm) | Intensity (Amp.) |
|-------------|-------------------|-------------------|------------------|
| 230 V/50 Hz | 2,300 to 9,600    | 500 to 1,800      | 1.6              |
| 120 V/60 Hz | 2,300 to 9,600    | 500 to 1,800      | 2.9              |
| 220 V/60 Hz | 2,300 to 9,600    | 500 to 1,800      | 1.4              |

Single-phase machine CMP 350 V.V.

| Motor       | Mixer Speed (rpm) | Intensity (Amp.) |
|-------------|-------------------|------------------|
| 230 V/50 Hz | 2,300 to 9,600    | 1.7              |
| 120 V/60 Hz | 2,300 to 9,600    | 3,1              |
| 220 V/60 Hz | 2,300 to 9,600    | 1.6              |

Single-phase machine CMP 400 V.V.

| Motor       | Mixer Speed (rpm) | Intensity (Amp.) |
|-------------|-------------------|------------------|
| 230 V/50 Hz | 2,300 to 9,600    | 1.9              |

- Power shown on data plate.

## SAFETY



### WARNING

The blades are sharp tools, handle them with care.

ROBOT-COUPE **power mixers** are equipped with a safety system comprising of a :

- safety control button
- safeties on motor: thermal and overload protection
- no volt release safety.

### • Safety control button

This safety mechanism prevents any unintentional starting of the power mixer. In fact, it is necessary to press down two buttons to start the power mixer. In order to start the machine, read the paragraph entitled OPERATING THE APPLIANCE (page 6).

### • Thermal and overload protection

If there is an obstruction in the container (a spoon or utensil) or the machine is exposed to over use / overload, the thermal safety mechanism automatically stop the motor. In this case, wait for the power mixer to cool down completely before restarting, see paragraph entitled OPERATING THE APPLIANCE (page 6).

### • No volt release a supply failure

In the event of a power cut or after the machine has been unplugged, the power mixer will not restart by itself. It is necessary to follow the steps in the paragraph entitled OPERATING THE APPLIANCE (page 6).



## RE M I N D E R

**Never try to override the locking and safety mechanisms.**

**Never insert an object into the preparation.**

**Never switch the appliance on unless it has been placed in the preparation bowl.**

**Before dismantling the foot and bell, always check that the power mixer is unplugged.**

**We recommend that you tilt the power mixer at a slight angle to prevent the bell from touching the bottom of the container.**

- Unplug the power mixer.
- Check :
  - the plug
  - that the blades are free to rotate in the bell,
  - the state of the power cord,
  - that the drive shaft is free to rotate. To do this, remove the bell and test the rotation of the end of the drive shaft manually.

**If a malfunction occurs which is not on our list of possible faults, consult your retailer or return the appliance to the after-sales service.**

## PROBLEMS

At first, try to identify precisely what has caused the power mixer to stop.

- **If it is due to a powercut if the appliance has been unplugged**

- Release the control button (CB).
- Check the power supply.
- Restart the power mixer following the paragraph entitled OPERATING THE APPLIANCE (page 6).

- **If it is due to overheating of the machine**

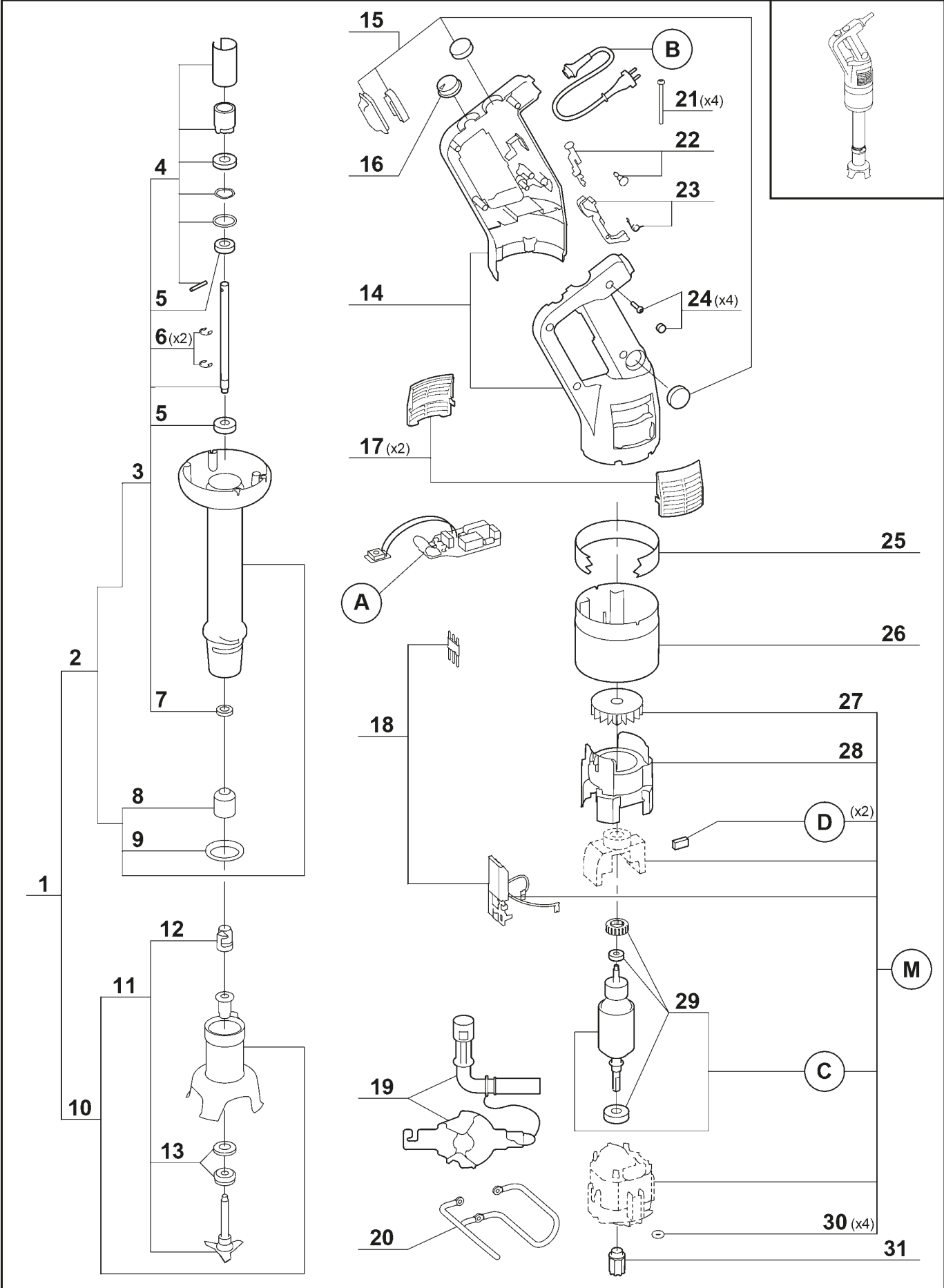
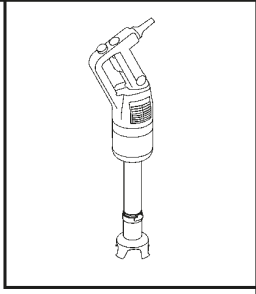
- Release the control button (CB).
- Unplug the power mixer.
- Wait a few minutes for the motor to cool down and the thermal safety mechanism to be reset.
- Restart the power mixer following the paragraph entitled OPERATING THE APPLIANCE (page 6).

- **If you cannot locate the cause of the problem**

- Release the control button (CB).

## STANDARDS

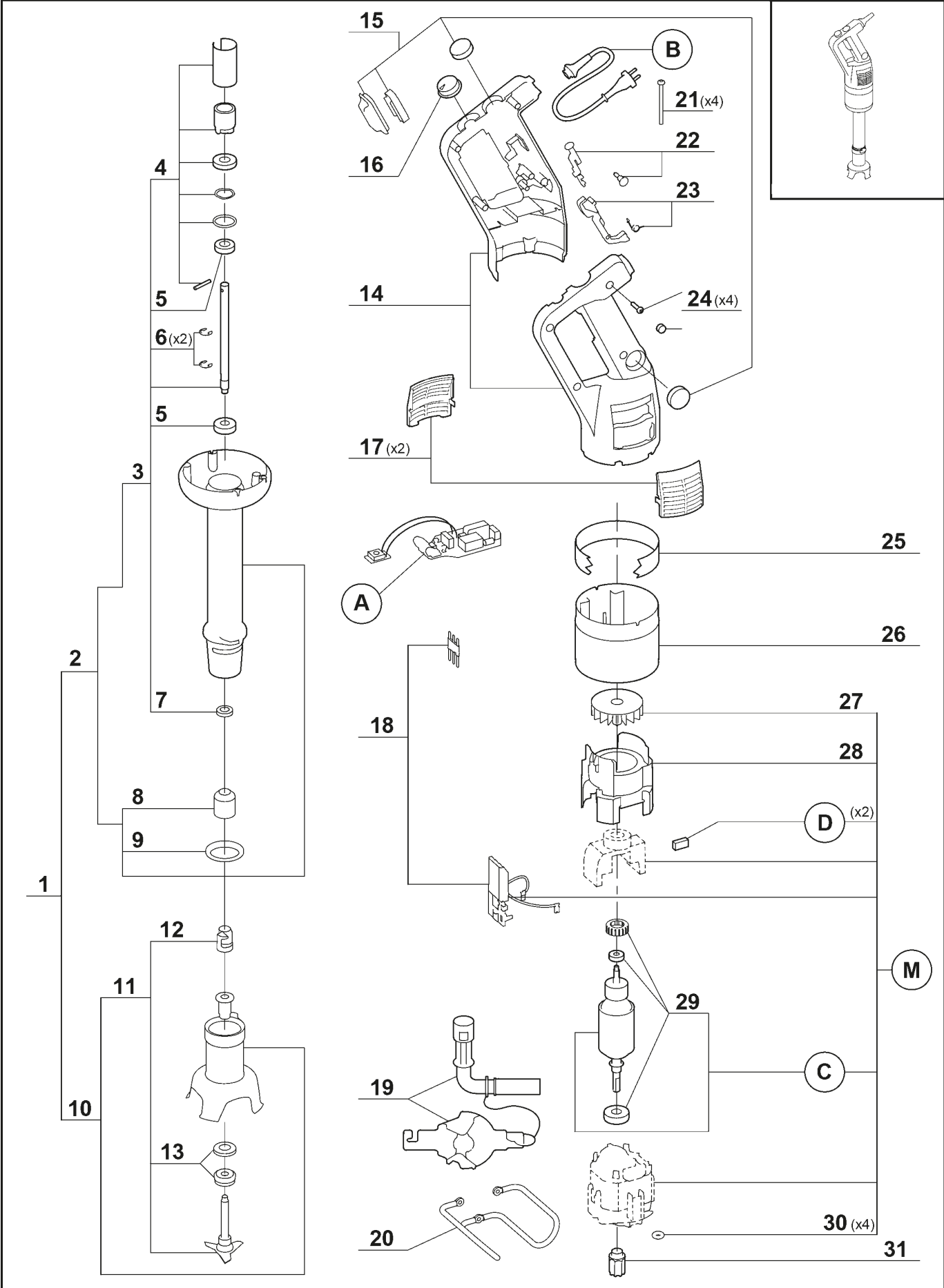
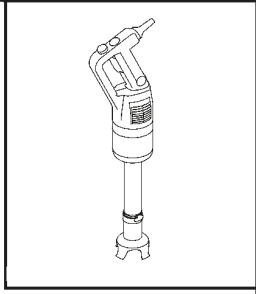
Consult the declaration of compliance on page 3.



| Index | Pièce / Part | Désignation                            | Description                                |
|-------|--------------|--|--|
| 1     | 89 079       | PIED COMPLET CMP 250                   | CMP 250 COMPLETE FOOT                      |
| 2     | 89 652       | PIED CMP 250 EQUIPE                    | CMP 250 FOOT                               |
| 3     | 89 685       | ARBRE D'ENTRAINEMENT CMP 250           | CMP250 DRIVING SHAFT                       |
| 4     | 89 643       | KIT PIED MPC/CMP/CMPC                  | MPC/CMP/CMPC FOOT KIT                      |
| 5     | 89 645       | ROULEMENT INOX 608 2RS                 | STAINL ST BEAR 608 2RS                     |
| 6     | 89 647       | ANNEAU "E" (x2)                        | RING "E" (x2)                              |
| 7     | 89 646       | JOINT A LEVRE 8x18x5                   | SEAL 8x18x5                                |
| 8     | 89 626       | CAGE D'ENTRAINEMENT MP/CMP             | MP/CMP DRIVING FRAME                       |
| 9     | 89 628       | JOINT DE PIED MP/CMP                   | FOOT SEAL                                  |
| 10    | 89 678       | CLOCHE CMP EQUIPEE                     | CMP BELL COVER                             |
| 11    | 89 676       | COUTEAU CMP                            | CMP BLADE                                  |
| 12    | 89 627       | MOYEU D'ENTRAINEMENT MP/CMP            | MP/CMP DRIVING HUB                         |
| 13    | 89 642       | GARNITURE D'ETANCHEITE                 | SEAL RING                                  |
| 14    | 89 547       | KIT POIGNEES (G+D)+VIS+CACHE CMP       | CMP HANDLES (L+R) KIT+SCREW+ CAP SCREW CMP |
| 15    | 89 533       | KIT ETANCHEITE MP/CMP+VIS+CACHE VIS    | MP/CMP WATERPROOFNESS KIT+SCREW+CAP SCREW  |
| 16    | 89 536       | BOUTON VARIATEUR MP/CMP.+VIS+CACHE VIS | MP/CMP VARIATOR SWITCH+SCREW+CAP SCREW     |
| 17    | 89 546       | KIT GRILLES CMP (x2)                   | CMP VENT COVERS KIT (x2)                   |
| 18    | 89 548       | KIT CONNECTION+VIS+CACHE VIS           | CONNECTOR KIT+SCREW+CAP SCREW              |
| 19    | 89 662       | OUTILLAGE DE DEMONTAGE MP/CMP          | MP/CMP DISMOUNT TOOL                       |
| 20    | 89 637       | SUPPORT MURAL CMP                      | CMP WALL SUPPORT                           |
| 21    | 89 623       | VIS M4x95 CMP (x4)                     | CMP SCREW M4x95 (x4)                       |
| 22    | 89 530       | KIT BOUTON MP/CMP+VIS+CACHE VIS        | MP/CMP KNOBS KIT +SCREW+CAP SCREW KIT      |
| 23    | 89 531       | KIT LEVIER CDE MPC/CMP+VIS+CACHE VIS   | MPC/CMP COMMAND ARM KIT+SCREW+CAP SCREW    |
| 24    | 89 532       | KIT VIS POIG MP/CMP (x4)               | MP/CMP HANDLE SCREW (x4)                   |
| 25    | 89 605       | VIOLE CMP 250 V.V.                     | CMP250VV FERRULE                           |
| 26    | 89 612       | VIOLE MOTEUR CMP                       | CMP MOTOR FERRULE                          |
| 27    | 89 576       | VENTILATEUR CMP                        | CMP VENTILATOR                             |
| 28    | 89 570       | CONDUIT VENTILATEUR CMP                | CMP VENTILATOR PIPE                        |
| 29    | 89 679       | ROULEMENT MOTEUR CMP                   | CMP MOTOR BEARING                          |
| 30    | 89 639       | JOINT TORIQUE Ø2x1,5 (x4)              | SEAL Ø2x1,5 (x4)                           |
| 31    | 89 632       | MOYEU D'ENTRAINEMENT MPC               | MPC DRIVING HUB                            |

| Index    | Désignation          | Description     |
|----------|----------------------|-----------------|
| <b>A</b> | PLATINE              | CIRCUIT BOARD   |
| <b>B</b> | CABLE D'ALIMENTATION | POWER CORD      |
| <b>C</b> | INDUIT               | INDUCED CIRCUIT |
| <b>D</b> | CHARBONS (x2)        | BRUSHES (x2)    |
| <b>M</b> | MOTEUR               | MOTOR           |

| Machine                         | Voltage         | A             | B             | C             | D             | M             |
|---------------------------------|-----------------|---------------|---------------|---------------|---------------|---------------|
| <b>34 244 A BRA</b>             | <b>220/60/1</b> | <b>89 263</b> | <b>89 117</b> | <b>89 759</b> | <b>89 575</b> | <b>89 767</b> |
| <b>34 248 / 34 248 A Arabie</b> |                 | <b>89 753</b> | <b>89 539</b> |               |               |               |
| <b>34 244 / 34 244 A</b>        |                 | <b>89 751</b> | <b>89 538</b> |               |               |               |
| <b>34 240 / 34 240 A</b>        | <b>89 542</b>   |               |               |               |               |               |
| <b>34 246 / 34 246 A Suisse</b> | <b>89 539</b>   |               |               |               |               |               |
| <b>34 241 / 34 241 A UK</b>     | <b>89 540</b>   |               |               |               |               |               |
| <b>34 242 / 34 242 A Aust</b>   | <b>240/50/1</b> | <b>89 541</b> | <b>89 760</b> |               |               |               |
| <b>34 245 / 34 245 A</b>        |                 | <b>89 752</b> |               |               |               |               |
| <b>34 249 / 34 249 A Japon</b>  |                 | <b>89 522</b> |               |               |               |               |

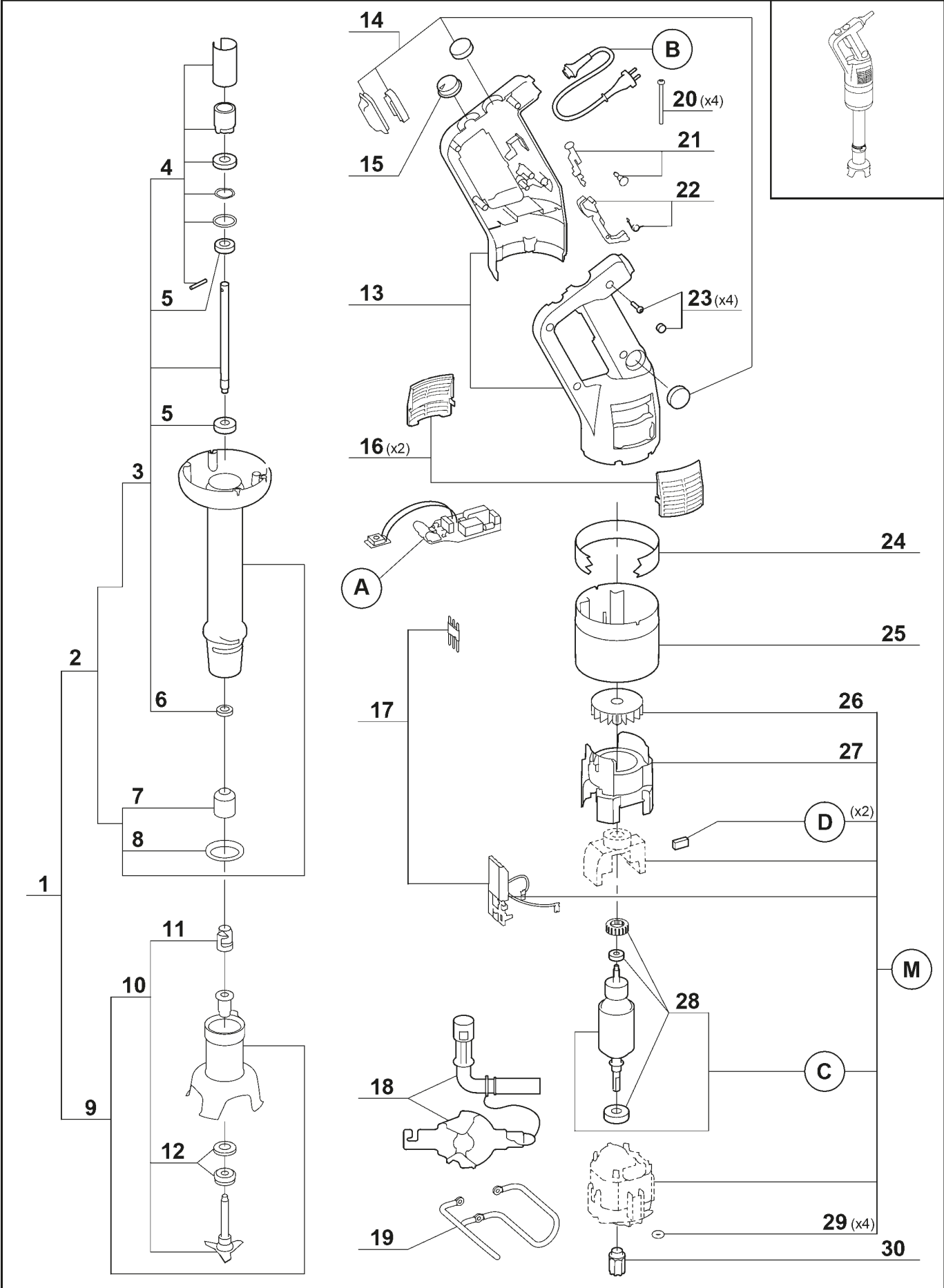
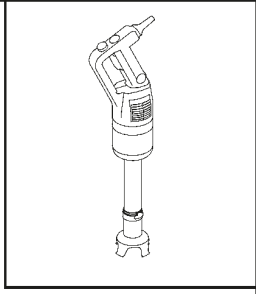




| Index | Pièce / Part | Désignation                            | Description                                |
|-------|--------------|--|--|
| 1     | 89 080       | PIED CMP 300 COMPLET                   | CMP 300 COMPLETE FOOT                      |
| 2     | 89 653       | PIED CMP 300 EQUIPE                    | CMP 300 FOOT                               |
| 3     | 89 686       | ARBRE D'ENTRAINEMENT CMP 300           | CMP 300 DRIVING SHAFT                      |
| 4     | 89 643       | KIT PIED MPC/CMP/CMPC                  | MPC/CMP/CMPC FOOT KIT                      |
| 5     | 89 645       | ROULEMENT INOX 608 2RS                 | STAINL ST BEAR 608 2RS                     |
| 6     | 89 647       | ANNEAU "E" (x2)                        | RING "E" (x2)                              |
| 7     | 89 646       | JOINT A LEVRE 8x18x5                   | SEAL 8x18x5                                |
| 8     | 89 626       | CAGE D'ENTRAINEMENT MP/CMP             | MP/CMP DRIVING FRAME                       |
| 9     | 89 628       | JOINT DE PIED MP/CMP                   | FOOT SEAL                                  |
| 10    | 89 678       | CLOCHE CMP EQUIPEE                     | CMP BELL COVER                             |
| 11    | 89 676       | COUTEAU CMP                            | CMP BLADE                                  |
| 12    | 89 627       | MOYEU D'ENTRAINEMENT MP/CMP            | MP/CMP DRIVING HUB                         |
| 13    | 89 642       | GARNITURE D'ETANCHEITE                 | SEAL RING                                  |
| 14    | 89 547       | KIT POIGNEES (G+D)+VIS+CACHE CMP       | CMP HANDLES (L+R) KIT+SCREW+ CAP SCREW CMP |
| 15    | 89 533       | KIT ETANCHEITE MP/CMP+VIS+CACHE VIS    | MP/CMP WATERPROOFNESS KIT+SCREW+CAP SCREW  |
| 16    | 89 536       | BOUTON VARIATEUR MP/CMP.+VIS+CACHE VIS | MP/CMP VARIATOR SWITCH+SCREW+CAP SCREW     |
| 17    | 89 546       | KIT GRILLES CMP (x2)                   | CMP VENT COVERS KIT (x2)                   |
| 18    | 89 548       | Kit CONNECTEUR+VIS+CACHE VIS           | CONNECTOR KIT+SCREW+CAP SCREW              |
| 19    | 89 662       | OUTILLAGE DE DEMONTAGE MP/CMP          | MP/CMP DISMOUNT TOOL                       |
| 20    | 89 637       | SUPPORT MURAL CMP                      | CMP WALL SUPPORT                           |
| 21    | 89 623       | VIS M4x95 CMP (x4)                     | CMP SCREW M4x95 (x4)                       |
| 22    | 89 530       | KIT BOUTON MP/CMP+VIS+CACHE VIS        | MP/CMP KNOBS KIT +SCREW+CAP SCREW KIT      |
| 23    | 89 531       | KIT LEVIER CDE MPC/CMP+VIS+CACHE VIS   | MPC/CMP COMMAND ARM KIT+SCREW+CAP SCREW    |
| 24    | 89 532       | KIT VIS POIG MP/CMP (x4)               | MP/CMP HANDLE SCREW (x4)                   |
| 25    | 89 606       | VIROLE CMP 300 V.V.                    | CMP 300 VV FERRULE                         |
| 26    | 89 612       | VIROLE MOTEUR CMP                      | CMP MOTOR FERRULE                          |
| 27    | 89 576       | VENTILATEUR CMP                        | CMP VENTILATOR                             |
| 28    | 89 570       | CONDUIT VENTILATEUR CMP                | CMP VENTILATOR PIPE                        |
| 29    | 89 679       | ROULEMENT MOTEUR CMP                   | CMP MOTOR BEARING                          |
| 30    | 89 639       | JOINT TORIQUE Ø2x1,5 (x4)              | SEAL Ø2x1,5 (x4)                           |
| 31    | 89 632       | MOYEU D'ENTRAINEMENT MPC               | MPC DRIVING HUB                            |

| Index    | Désignation          | Description     |
|----------|----------------------|-----------------|
| <b>A</b> | PLATINE              | CIRCUIT BOARD   |
| <b>B</b> | CABLE D'ALIMENTATION | POWER CORD      |
| <b>C</b> | INDUIT               | INDUCED CIRCUIT |
| <b>D</b> | CHARBONS (x2)        | BRUSHES (x2)    |
| <b>M</b> | MOTEUR               | MOTOR           |

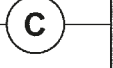
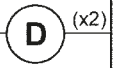
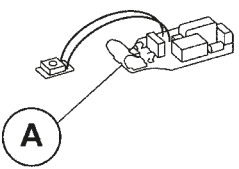
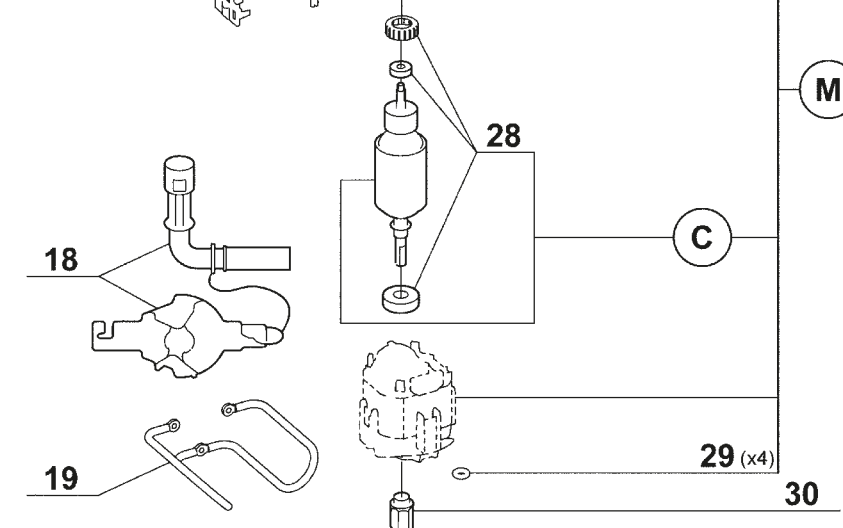
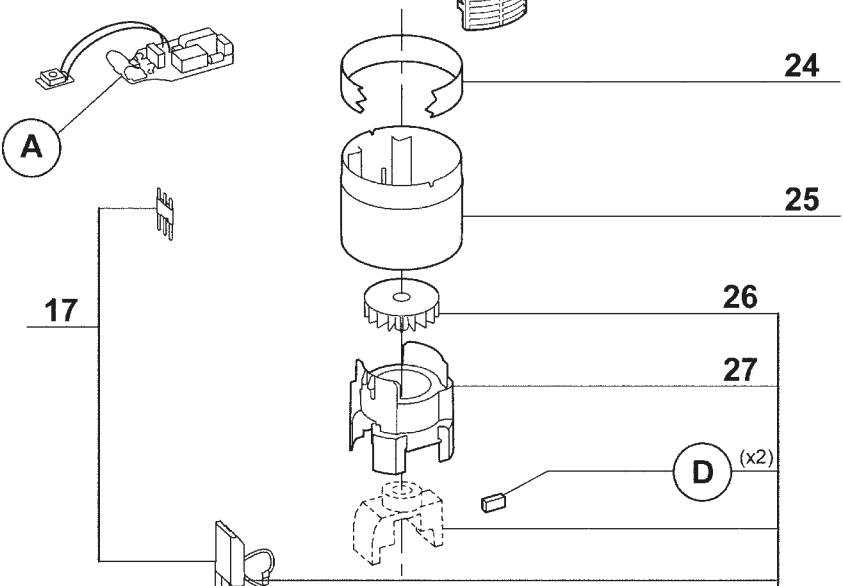
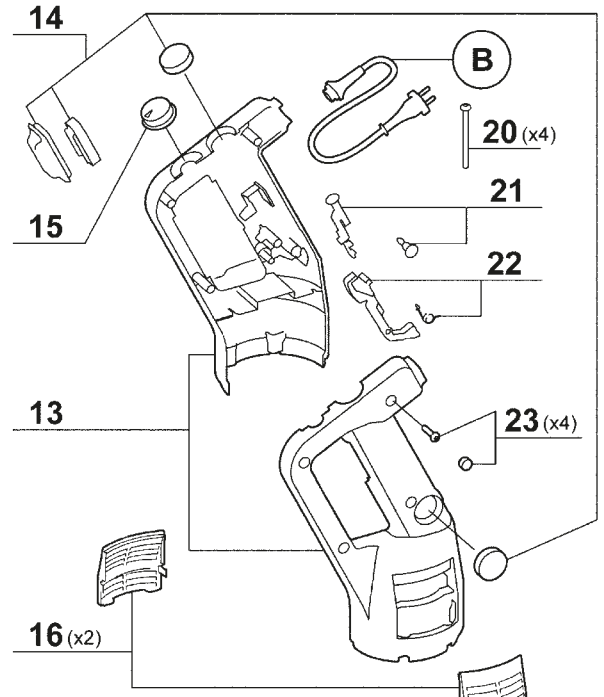
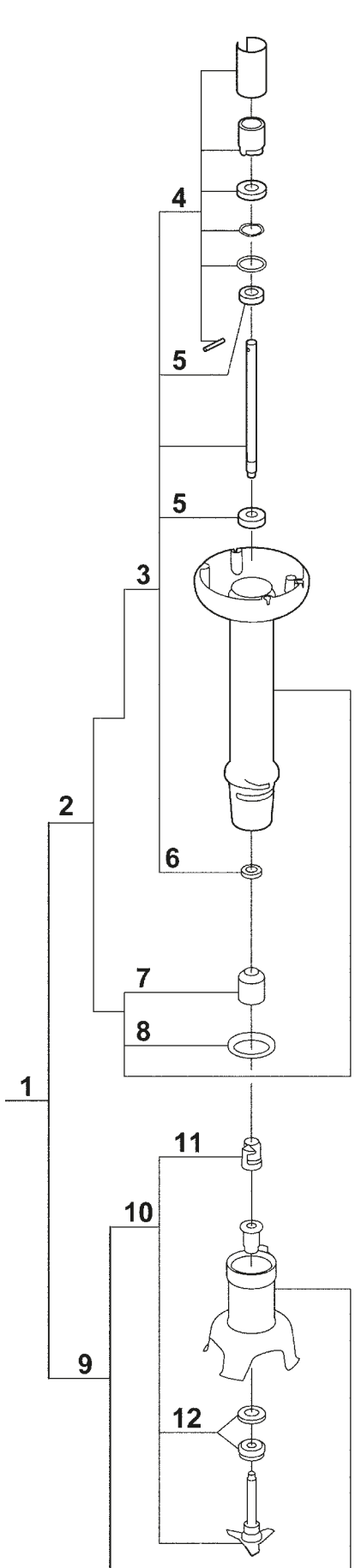
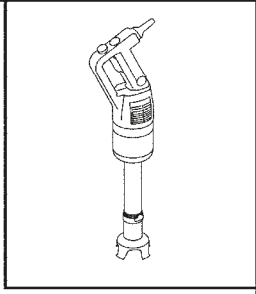
| Machine                 | Voltage  | A      | B      | C      | D      | M      |
|-------------------------|----------|--------|--------|--------|--------|--------|
| 34 234 A BRA            | 220/60/1 | 89 263 | 89 117 | 89 759 | 89 575 | 89 761 |
| 34 238 / 34238 A Arabie |          | 89 753 | 89 539 |        |        |        |
| 34 234 / 34234 A        |          |        | 89 538 |        |        |        |
| 34 230 / 34 230 A       | 230/50/1 | 89 751 | 89 542 |        |        |        |
| 34 236 / 34236 A Suisse |          |        | 89 110 |        |        |        |
| 34 230 A ZAF            |          |        | 89 539 |        |        |        |
| 34 231 / 34 231 A UK    | 240/50/1 | 89 751 | 89 540 |        |        |        |
| 34 232 / 34232 A Aust   |          |        | 89 541 |        |        |        |
| 34 235 / 34235 A        | 120/60/1 | 89 752 | 89 522 | 89 760 | 89 762 |        |
| 34 239 / 34239 A Japon  |          |        | 89 522 |        |        |        |



| Index | Pièce / Part | Désignation                            | Description                                |
|-------|--------------|--|--|
| 1     | 89 081       | PIED CMP 350 COMPLET                   | CMP 350 COMPLETE FOOT                      |
| 2     | 89 654       | PIED CMP 350 EQUIPE                    | CMP 350 FOOT                               |
| 3     | 89 687       | ARBRE D'ENTRAINEMENT CMP 350           | CMP 350 DRIVING SHAFT                      |
| 4     | 89 643       | KIT PIED MPC/CMP/CMPC                  | MPC/CMP/CMPC FOOT KIT                      |
| 5     | 89 645       | ROULEMENT INOX 608 2RS                 | STAINL ST BEAR 608 2RS                     |
| 6     | 89 646       | JOINT A LEVRE 8x18x5                   | SEAL 8x18x5                                |
| 7     | 89 626       | CAGE D'ENTRAINEMENT MP/CMP             | MP/CMP DRIVING FRAME                       |
| 8     | 89 628       | JOINT DE PIED MP/CMP                   | FOOT SEAL                                  |
| 9     | 89 678       | CLOCHE CMP EQUIPEE                     | CMP BELL COVER                             |
| 10    | 89 676       | COUTEAU CMP                            | CMP BLADE                                  |
| 11    | 89 627       | MOYEU D'ENTRAINEMENT MP/CMP            | MP/CMP DRIVING HUB                         |
| 12    | 89 642       | GARNITURE D'ETANCHEITE                 | SEAL RING                                  |
| 13    | 89 547       | KIT POIGNEES (G+D)+VIS+CACHE CMP       | CMP HANDLES (L+R) KIT+SCREW+ CAP SCREW CMP |
| 14    | 89 533       | KIT ETANCHEITE MP/CMP+VIS+CACHE VIS    | MP/CMP WATERPROOFNESS KIT+SCREW+CAP SCREW  |
| 15    | 89 536       | BOUTON VARIATEUR MP/CMP.+VIS+CACHE VIS | MP/CMP VARIATOR SWITCH+SCREW+CAP SCREW     |
| 16    | 89 546       | KIT GRILLES CMP (x2)                   | CMP VENT COVERS KIT (x2)                   |
| 17    | 89 548       | Kit CONNECTEUR+VIS+CACHE VIS           | CONNECTOR KIT                              |
| 18    | 89 662       | OUTILLAGE DE DEMONTAGE MP/CMP          | MP/CMP DISMOUNT TOOL                       |
| 19    | 89 637       | SUPPORT MURAL CMP                      | CMP WALL SUPPORT                           |
| 20    | 89 623       | VIS M4x95 CMP (x4)                     | CMP SCREW M4x95 (x4)                       |
| 21    | 89 530       | KIT BOUTON MP/CMP+VIS+CACHE VIS        | MP/CMP KNOBS KIT +SCREW+CAP SCREW KIT      |
| 22    | 89 531       | KIT LEVIER CDE MPC/CMP+VIS+CACHE VIS   | MPC/CMP COMMAND ARM KIT+SCREW+CAP SCREW    |
| 23    | 89 532       | KIT VIS POIG MP/CMP (x4)               | MP/CMP HANDLE SCREW (x4)                   |
| 24    | 89 607       | VIOLE CMP 350 V.V.                     | CMP 350 VV FERRULE                         |
| 25    | 89 612       | VIOLE MOTEUR CMP                       | CMP MOTOR FERRULE                          |
| 26    | 89 576       | VENTILATEUR CMP                        | CMP VENTILATOR                             |
| 27    | 89 570       | CONDUIT VENTILATEUR CMP                | CMP VENTILATOR PIPE                        |
| 28    | 89 679       | ROULEMENT MOTEUR CMP                   | CMP MOTOR BEARING                          |
| 29    | 89 639       | JOINT TORIQUE Ø2x1,5 (x4)              | SEAL Ø2x1,5 (x4)                           |
| 30    | 89 632       | MOYEU D'ENTRAINEMENT MPC               | MPC DRIVING HUB                            |

| Index    | Désignation          | Description     |
|----------|----------------------|-----------------|
| <b>A</b> | PLATINE              | CIRCUIT BOARD   |
| <b>B</b> | CABLE D'ALIMENTATION | POWER CORD      |
| <b>C</b> | INDUIT               | INDUCED CIRCUIT |
| <b>D</b> | CHARBONS (x2)        | BRUSHES (x2)    |
| <b>M</b> | MOTEUR               | MOTOR           |

| Machine                         | Voltage         | A             | B             | C             | D             | M             |
|---------------------------------|-----------------|---------------|---------------|---------------|---------------|---------------|
| <b>34 254 A BRA</b>             | <b>220/60/1</b> | <b>89 263</b> | <b>89 117</b> | <b>89 759</b> | <b>89 575</b> | <b>89 768</b> |
| <b>34 258 / 34 258 A Arabie</b> |                 | <b>89 753</b> | <b>89 539</b> |               |               |               |
| <b>34 254 / 34 254 A</b>        |                 | <b>89 751</b> | <b>89 538</b> |               |               |               |
| <b>34 250 / 34 250 A</b>        | <b>230/50/1</b> |               | <b>89 542</b> |               |               |               |
| <b>34 256 / 34 256 A Suisse</b> | <b>240/50/1</b> |               | <b>89 539</b> |               |               |               |
| <b>34 251 / 34 251 A UK</b>     |                 |               | <b>89 540</b> |               |               |               |
| <b>34 252 / 34 252 A Aust</b>   | <b>120/60/1</b> | <b>89 752</b> | <b>89 541</b> | <b>89 760</b> |               | <b>89 770</b> |
| <b>34 255 / 34 255 A</b>        |                 |               | <b>89 522</b> |               |               |               |
| <b>34 259 / 34 259 A Japon</b>  |                 |               |               |               |               |               |



| Index | Pièce / Part | Désignation                            | Description                                |
|-------|--------------|--|--|
| 1     | 89 082       | PIED CMP 400 COMPLET                   | CMP 400 COMPLETE FOOT                      |
| 2     | 89 655       | PIED CMP 400 EQUIPE                    | CMP 400 FOOT                               |
| 3     | 89 151       | ARBRE D'ENTRAINEMENT CMP 400           | CMP 400 DRIVING SHAFT                      |
| 4     | 89 643       | KIT PIED MPC/CMP/CMPC                  | MPC/CMP/CMPC FOOT KIT                      |
| 5     | 89 645       | ROULEMENT INOX 608 2RS                 | STAINL ST BEAR 608 2RS                     |
| 6     | 89 646       | JOINT A LEVRE 8x18x5                   | SEAL 8x18x5                                |
| 7     | 89 626       | CAGE D'ENTRAINEMENT MP/CMP             | MP/CMP DRIVING FRAME                       |
| 8     | 89 628       | JOINT DE PIED MP/CMP                   | FOOT SEAL                                  |
| 9     | 89 678       | CLOCHE CMP EQUIPEE                     | CMP BELL COVER                             |
| 10    | 89 676       | COUTEAU CMP                            | CMP BLADE                                  |
| 11    | 89 627       | MOYEU D'ENTRAINEMENT MP/CMP            | MP/CMP DRIVING HUB                         |
| 12    | 89 642       | GARNITURE D'ETANCHEITE                 | SEAL RING                                  |
| 13    | 89 547       | KIT POIGNEES (G+D)+VIS+CACHE CMP       | CMP HANDLES (L+R) KIT+SCREW+ CAP SCREW CMP |
| 14    | 89 533       | KIT ETANCHEITE MP/CMP+VIS+CACHE VIS    | MP/CMP WATERPROOFNESS KIT+SCREW+CAP SCREW  |
| 15    | 89 536       | BOUTON VARIATEUR MP/CMP.+VIS+CACHE VIS | MP/CMP VARIATOR SWITCH+SCREW+CAP SCREW     |
| 16    | 89 546       | KIT GRILLES CMP (x2)                   | CMP VENT COVERS KIT (x2)                   |
| 17    | 89 548       | Kit CONNECTEUR+VIS+CACHE VIS           | CONNECTOR KIT+SCREW+CAP SCREW              |
| 18    | 89 662       | OUTILLAGE DE DEMONTAGE MP/CMP          | MP/CMP DISMOUNT TOOL                       |
| 19    | 89 637       | SUPPORT MURAL CMP                      | CMP WALL SUPPORT                           |
| 20    | 89 623       | VIS M4x95 CMP (x4)                     | CMP SCREW M4x95 (x4)                       |
| 21    | 89 530       | KIT BOUTON MP/CMP+VIS+CACHE VIS        | MP/CMP KNOBS KIT +SCREW+CAP SCREW KIT      |
| 22    | 89 531       | KIT LEVIER CDE MPC/CMP+VIS+CACHE VIS   | MPC/CMP COMMAND ARM KIT+SCREW+CAP SCREW    |
| 23    | 89 532       | KIT VIS POIG MP/CMP (x4)               | MP/CMP HANDLE SCREW (x4)                   |
| 24    | 89 608       | VIROLE CMP 400 V.V.                    | CMP 400 VV FERRULE                         |
| 25    | 89 612       | VIROLE MOTEUR CMP                      | CMP MOTOR FERRULE                          |
| 26    | 89 576       | VENTILATEUR CMP                        | CMP VENTILATOR                             |
| 27    | 89 570       | CONDUIT VENTILATEUR CMP                | CMP VENTILATOR PIPE                        |
| 28    | 89 679       | ROULEMENT MOTEUR CMP                   | CMP MOTOR BEARING                          |
| 29    | 89 639       | JOINT TORIQUE Ø2x1,5 (x4)              | SEAL Ø2x1,5 (x4)                           |
| 30    | 89 632       | MOYEU D'ENTRAINEMENT MPC               | MPC DRIVING HUB                            |

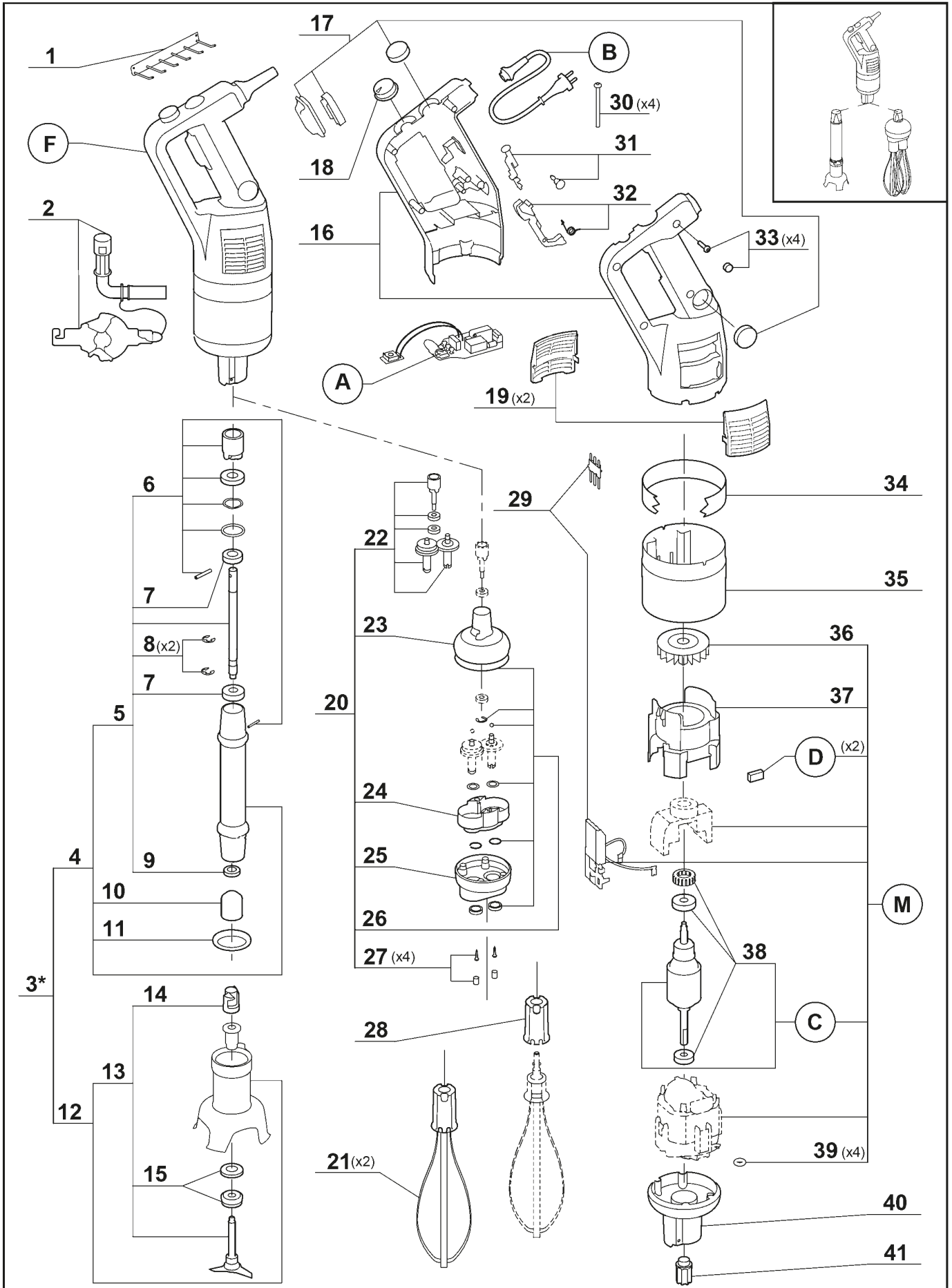
| Index    | Désignation          | Description     |
|----------|----------------------|-----------------|
| <b>A</b> | PLATINE              | CIRCUIT BOARD   |
| <b>B</b> | CABLE D'ALIMENTATION | POWER CORD      |
| <b>C</b> | INDUIT               | INDUCED CIRCUIT |
| <b>D</b> | CHARBONS (x2)        | BRUSHES (x2)    |
| <b>M</b> | MOTEUR               | MOTOR           |

| Machine              | Voltage  | A      | B      | C      | D      | M      |
|----------------------|----------|--------|--------|--------|--------|--------|
| 34 261 / 34 261 A UK | 240/50/1 | 89 751 | 89 539 | 89 759 | 89 575 | 89 994 |
| 34 260 / 34 260 A    | 230/50/1 |        | 89 538 |        |        |        |

**robotcoupe®**

**CMP 250 Combi**

N° de série / Serial number  
 - 161 - - - - - 373 - - - - -  
 - 739 - - - - -



\* Voir tarif machines / See export price list

| Index | Pièce / Part | Désignation   | Description                                |
|-------|--------------|---|--|
| 1     | 89 630       | SUPPORT MURAL MPC   | MPC WALL SUPPORT                           |
| 2     | 89 662       | OUTIL DEMONTAGE MP/CMP  | MP/CMP DISMOUNT TOOL                       |
| 3     | * 27 249     | PIED CMPC 250 COMPLET   | CMP 250 COMPLETE FOOT                      |
| 4     | 89 656       | PIED CMPC 250 EQUIPE  | CMPC250 FOOT                               |
| 5     | 89 811       | ARBRE D'ENTRAINEMENT CMPC 250                                 | CMPC 250 DRIVING SHAFT                     |
| 6     | 89 643       | KIT PIED MPC/CMP/CMPC   | MPC/CMP/CMPC FOOT KIT                      |
| 7     | 89 645       | ROULEMENT INOX 608 2RS  | STAINL ST BEAR 608 2RS                     |
| 8     | 89 647       | ANNEAU "E" (x2)   | RING "E" (x2)                              |
| 9     | 89 646       | JOINT A LEVRE 8x18x5  | SEAL 8x18x5                                |
| 10    | 89 626       | CAGE D'ENTRAINEMENT MP/CMP                                    | MP/CMP DRIVING FRAME                       |
| 11    | 89 628       | JOINT DE PIED MP/CMP  | FOOT SEAL                                  |
| 12    | 89 678       | CLOCHE CMP EQUIPEE  | CMP BELL COVER                             |
| 13    | 89 676       | COUTEAU CMP   | CMP BLADE                                  |
| 14    | 89 627       | MOYEU D'ENTRAINEMENT MP/CMP                                   | MP/CMP DRIVING HUB                         |
| 15    | 89 642       | GARNITURE D'ETANCHEITE  | SEAL RING                                  |
| 16    | 89 547       | KIT POIGNEES (G+D)+VIS+CACHE CMP                              | CMP HANDLES (L+R) KIT+SCREW+ CAP SCREW CMP |
| 17    | 89 533       | KIT ETANCHEITE MP/CMP+VIS+CACHE VIS                           | MP/CMP WATERPROOFNESS KIT+SCREW+CAP SCREW  |
| 18    | 89 536       | BOUTON VARIATEUR MP/CMP.+VIS+CACHE VIS                        | MP/CMP VARIATOR SWITCH+SCREW+CAP SCREW     |
| 19    | 89 546       | KIT GRILLES CMP (x2)  | CMP VENT COVERS KIT (x2)                   |
| 20    | 89 651       | BOITE FOUET CMP   | CMP WHIP BOX                               |
| 21    | 89 649       | FOUETS CMP (x2)   | CMP WHIPS (x2)                             |
| 22    | 89 549       | KIT PIGNONS + BAGUE + ROUL <sup>ent</sup> +VIS+CACHE-VIS B.F. | GEARS+RING+BEARING+SCREW+CAP SCREW KIT     |
| 23    | 89 379       | COQUE SUP BF MP/CMP+VIS+CACHE VIS                             | MP/CMP BF UPPER BODY+SCREW+CAP SCREW       |
| 24    | 89 385       | FLASQUE+VIS+CACHE-VIS   | PLATE+SCREW+CAP SCREW                      |
| 25    | 89 746       | COQUE INF PLAST BF CMP  | BF CMP LOWER BODY PLAS                     |
| 26    | 89 545       | KIT JOINT RONDELLE BF +VIS+CACHE VIS                          | BF SEAL WASHER KIT +SCREW+CAP SCREW KIT    |
| 27    | 89 389       | VIS+CVIS BF MP CMP  | BF SCREW+CAP SCREW                         |
| 28    | 89 552       | KIT EJECT FOUET MP/CMP  | MP/CMP WHIP EJECTOR                        |
| 29    | 89 548       | KIT CONNECTION CMP+VIS+CACHE VIS                              | CMP CONNECTOR KIT+SCREW+CAP SCREW          |
| 30    | 89 623       | VIS M4x95 CMP (x4)  | CMP SCREW M4x95 (x4)                       |
| 31    | 89 530       | KIT BOUTON MP/CMP+VIS+CACHE VIS                               | MP/CMP KNOBS KIT +SCREW+CAP SCREW KIT      |
| 32    | 89 531       | KIT LEVIER CDE MPC/CMP+VIS+CACHE VIS                          | MPC/CMP COMMAND ARM KIT+SCREW+CAP SCREW    |
| 33    | 89 532       | KIT VIS POIG MP/CMP (x4)                                      | MP/CMP HANDLE SCREW (x4)                   |
| 34    | 89 609       | VIROLE CMPC 250   | CMPC 250 FERRULE                           |
| 35    | 89 612       | VIROLE MOTEUR CMP   | CMP MOTOR FERRULE                          |
| 36    | 89 576       | VENTILATEUR CMP   | CMP VENTILATOR                             |
| 37    | 89 570       | CONDUIT VENTILATEUR CMP                                       | CMP VENTILATOR PIPE                        |
| 38    | 89 679       | ROULEMENT MOTEUR CMP  | CMP MOTOR BEARING                          |
| 39    | 89 639       | JOINT TORIQUE Ø2x1,5 (x4)                                     | SEAL Ø2x1,5 (x4)                           |
| 40    | 89 641       | CARTER ALU CMP  | CMP ALUMINIUM CASING                       |
| 41    | 89 661       | MOYEU D'ENTRAINEMENT CMPC                                     | CMPC DRIVING HUB                           |

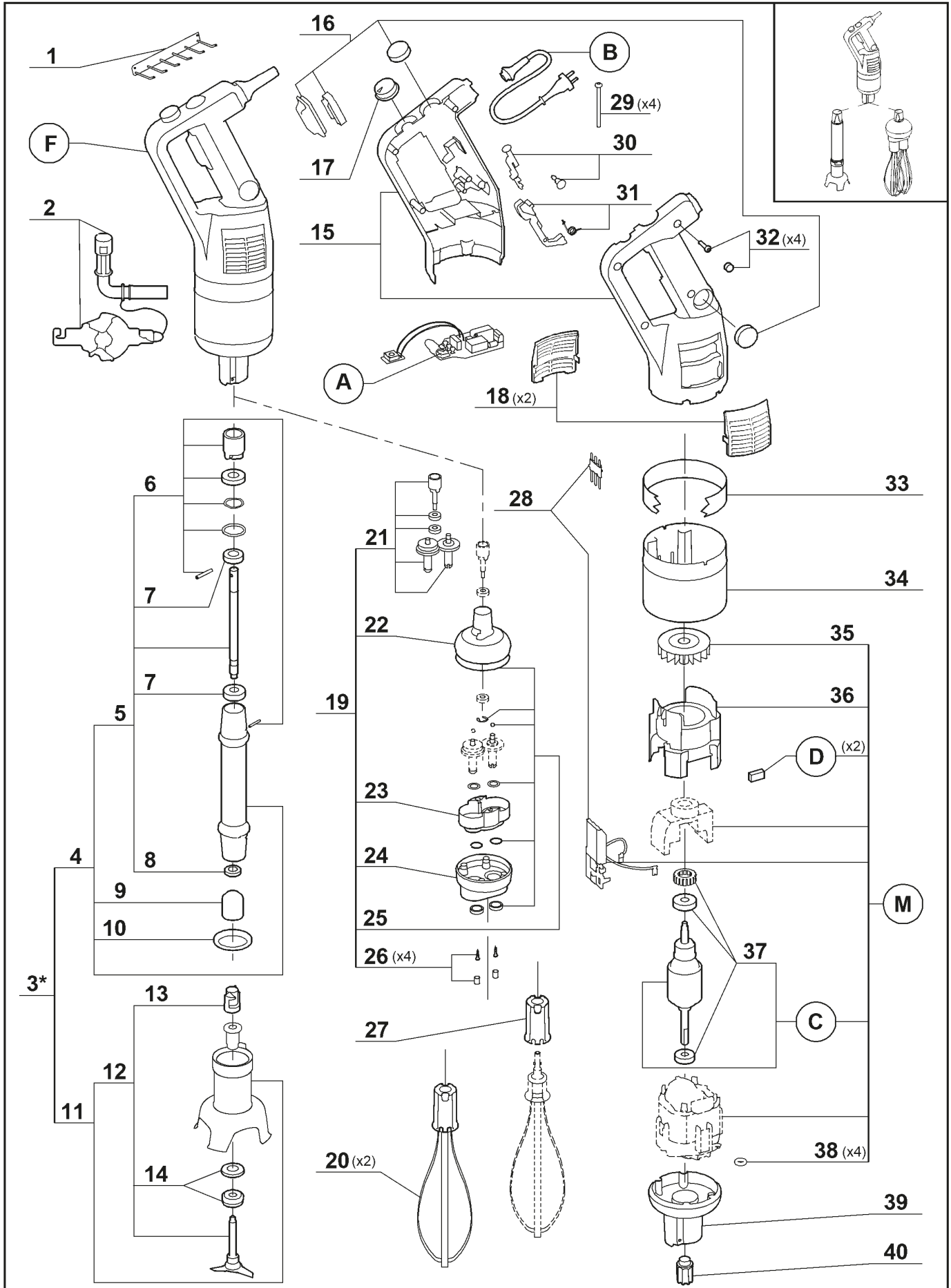
| Index    | Désignation          | Description     |
|----------|----------------------|-----------------|
| <b>A</b> | PLATINE              | CIRCUIT BOARD   |
| <b>B</b> | CABLE D'ALIMENTATION | POWER CORD      |
| <b>C</b> | INDUIT               | INDUCED CIRCUIT |
| <b>D</b> | CHARBONS (x2)        | BRUSHES (x2)    |
| <b>F</b> | BLOC MOTEUR          | BLOCK MOTOR     |
| <b>M</b> | MOTEUR               | MOTOR           |

| Machine                  | Voltage  | A      | B      | C      | D      | F      | M      |
|--------------------------|----------|--------|--------|--------|--------|--------|--------|
| 34 304 A BRA             | 220/60/1 | 89 263 | 89 117 | 89 759 | 89 575 | 89 118 | 89 767 |
| 34 308 / 34 308 A Arabie |          | 89 753 | 89 539 |        |        | 89 107 |        |
| 34 304 / 34 304 A        |          |        | 89 538 |        |        | 29 833 |        |
| 34 300 / 34 300 A        | 230/50/1 | 89 751 | 89 542 | 89 760 | 89 575 | 29 819 | 89 769 |
| 34 306 / 34 306 A Suisse |          |        | 89 405 |        |        | 29 837 |        |
| 34 307 / 34 307 A Suede  |          |        | 89 539 |        |        | 29 763 |        |
| 34 301 / 34 301 A UK     | 240/50/1 | 89 752 | 89 540 | 89 760 | 89 575 | 29 824 | 89 769 |
| 34 302 / 34 302 A Aust   |          |        | 89 541 |        |        | 29 828 |        |
| 34 305 / 34 305 A        |          |        | 89 522 |        |        | 29 841 |        |
| 34 309 / 34 309 A Japon  | 120/60/1 |        |        |        |        | 29 791 |        |

**robotcoupe®**

**CMP 300 Combi**

N° de série / Serial number  
 - 162 - - - - - 374 - - - - -  
 - 740 - - - - -



\* Voir tarif machines / See export price list



| Index | Pièce / Part | Désignation   | Description                                |
|-------|--------------|---|--|
| 1     | 89 630       | SUPPORT MURAL MPC   | MPC WALL SUPPORT                           |
| 2     | 89 662       | OUTIL DEMONTAGE MP/CMP  | MP/CMP DISMOUNT TOOL                       |
| 3     | * 27 250     | PIED CMPC 300 COMPLET   | CMPC 300 COMPLETE FOOT                     |
| 4     | 89 657       | PIED CMPC 300 EQUIPE  | CMPC 300 FOOT                              |
| 5     | 89 812       | ARBRE D'ENTRAINEMENT CMPC 300                                 | CMPC 250 DRIVING SHAFT                     |
| 6     | 89 643       | KIT PIED MPC/CMP/CMPC   | MPC/CMP/CMPC FOOT KIT                      |
| 7     | 89 645       | ROULEMENT INOX 608 2RS  | STAINL ST BEAR 608 2RS                     |
| 8     | 89 646       | JOINT A LEVRE 8x18x5  | SEAL 8x18x5                                |
| 9     | 89 626       | CAGE D'ENTRAINEMENT MP/CMP                                    | MP/CMP DRIVING FRAME                       |
| 10    | 89 628       | JOINT DE PIED MP/CMP  | FOOT SEAL                                  |
| 11    | 89 678       | CLOCHE CMP EQUIPEE  | CMP BELL COVER                             |
| 12    | 89 676       | COUTEAU CMP   | CMP BLADE                                  |
| 13    | 89 627       | MOYEU D'ENTRAINEMENT MP/CMP                                   | MP/CMP DRIVING HUB                         |
| 14    | 89 642       | GARNITURE D'ETANCHEITE  | SEAL RING                                  |
| 15    | 89 547       | KIT POIGNEES (G+D)+VIS+CACHE CMP                              | CMP HANDLES (L+R) KIT+SCREW+ CAP SCREW CMP |
| 16    | 89 533       | KIT ETANCHEITE MP/CMP+VIS+CACHE VIS                           | MP/CMP WATERPROOFNESS KIT+SCREW+CAP SCREW  |
| 17    | 89 536       | BOUTON VARIATEUR MP/CMP.+VIS+CACHE VIS                        | MP/CMP VARIATOR SWITCH+SCREW+CAP SCREW     |
| 18    | 89 546       | KIT GRILLES CMP (x2)  | CMP VENT COVERS KIT (x2)                   |
| 19    | 89 651       | BOITE FOUET CMP   | CMP WHIP BOX                               |
| 20    | 89 649       | FOUETS CMP (x2)   | CMP WHIPS (x2)                             |
| 21    | 89 549       | KIT PIGNONS + BAGUE + ROUL <sup>ent</sup> +VIS+CACHE-VIS B.F. | GEARS+RING+BEARING+SCREW+CAP SCREW KIT     |
| 22    | 89 379       | COQUE SUP BF MP/CMP+VIS+CACHE VIS                             | MP/CMP BF UPPER BODY+SCREW+CAP SCREW       |
| 23    | 89 385       | FLASQUE+VIS+CACHE-VIS   | PLATE+SCREW+CAP SCREW                      |
| 24    | 89 746       | COQUE INF PLAST BF CMP  | BF CMP LOWER BODY PLAS                     |
| 25    | 89 545       | KIT JOINT RONDELLE BF +VIS+CACHE VIS                          | BF SEAL WASHER KIT +SCREW+CAP SCREW KIT    |
| 26    | 89 389       | VIS+CVIS BF MP CMP  | BF SCREW+CAP SCREW                         |
| 27    | 89 552       | KIT EJECT FOUET MP/CMP  | MP/CMP WHIP EJECTOR                        |
| 28    | 89 548       | KIT CONNECTION CMP+VIS+CACHE VIS                              | CMP CONNECTOR KIT+SCREW+CAP SCREW          |
| 29    | 89 623       | VIS M4x95 CMP (x4)  | CMP SCREW M4x95 (x4)                       |
| 30    | 89 530       | KIT BOUTON MP/CMP+VIS+CACHE VIS                               | MP/CMP KNOBS KIT +SCREW+CAP SCREW KIT      |
| 31    | 89 531       | KIT LEVIER CDE MPC/CMP+VIS+CACHE VIS                          | MPC/CMP COMMAND ARM KIT+SCREW+CAP SCREW    |
| 32    | 89 532       | KIT VIS POIG MP/CMP (x4)                                      | MP/CMP HANDLE SCREW (x4)                   |
| 33    | 89 610       | VIROLE CMPC 300   | CMPC 300 FERRULE                           |
| 34    | 89 612       | VIROLE MOTEUR CMP   | CMP MOTOR FERRULE                          |
| 35    | 89 576       | VENTILATEUR CMP   | CMP VENTILATOR                             |
| 36    | 89 570       | CONDUIT VENTILATEUR CMP                                       | CMP VENTILATOR PIPE                        |
| 37    | 89 679       | ROULEMENT MOTEUR CMP  | CMP MOTOR BEARING                          |
| 38    | 89 639       | JOINT TORIQUE Ø2x1,5 (x4)                                     | SEAL Ø2x1,5 (x4)                           |
| 39    | 89 641       | CARTER ALU CMP  | CMP ALUMINIUM CASING                       |
| 40    | 89 661       | MOYEU D'ENTRAINEMENT CMPC                                     | CMPC DRIVING HUB                           |

| Index    | Désignation          | Description     |
|----------|----------------------|-----------------|
| <b>A</b> | PLATINE              | CIRCUIT BOARD   |
| <b>B</b> | CABLE D'ALIMENTATION | POWER CORD      |
| <b>C</b> | INDUIT               | INDUCED CIRCUIT |
| <b>D</b> | CHARBONS (x2)        | BRUSHES (x2)    |
| <b>F</b> | BLOC MOTEUR          | BLOCK MOTOR     |
| <b>M</b> | MOTEUR               | MOTOR           |

| Machine                  | Voltage  | A      | B      | C      | D      | F      | M      |
|--------------------------|----------|--------|--------|--------|--------|--------|--------|
| 34 314 A BRA             | 220/60/1 | 89 263 | 89 117 | 89 759 | 89 575 | 89 119 | 89 761 |
| 34 318 / 34 318 A Arabie |          | 89 753 | 89 539 |        |        | 89 108 |        |
| 34 314 / 34 314 A        |          |        | 89 538 |        |        | 29 834 |        |
| 34 310 / 34 310 A        | 230/50/1 | 89 751 | 89 542 | 89 759 | 89 575 | 29 820 | 89 761 |
| 34 316 / 34 316 A Suisse |          |        | 89 110 |        |        | 29 838 |        |
| 34 310 A ZAF             |          |        | 89 539 |        |        | 89 111 |        |
| 34 311 / 34 311 A UK     | 240/50/1 | 89 751 | 89 540 | 89 759 | 89 575 | 29 825 | 89 761 |
| 34 322 / 34 322 A Aust   |          |        | 89 541 |        |        | 29 829 |        |
| 34 315 / 34 315 A        | 120/60/1 | 89 752 | 89 522 | 89 760 | 89 575 | 29 842 | 89 762 |
| 34 319 / 34 319 A Japon  |          |        | 89 522 |        |        | 29 792 |        |

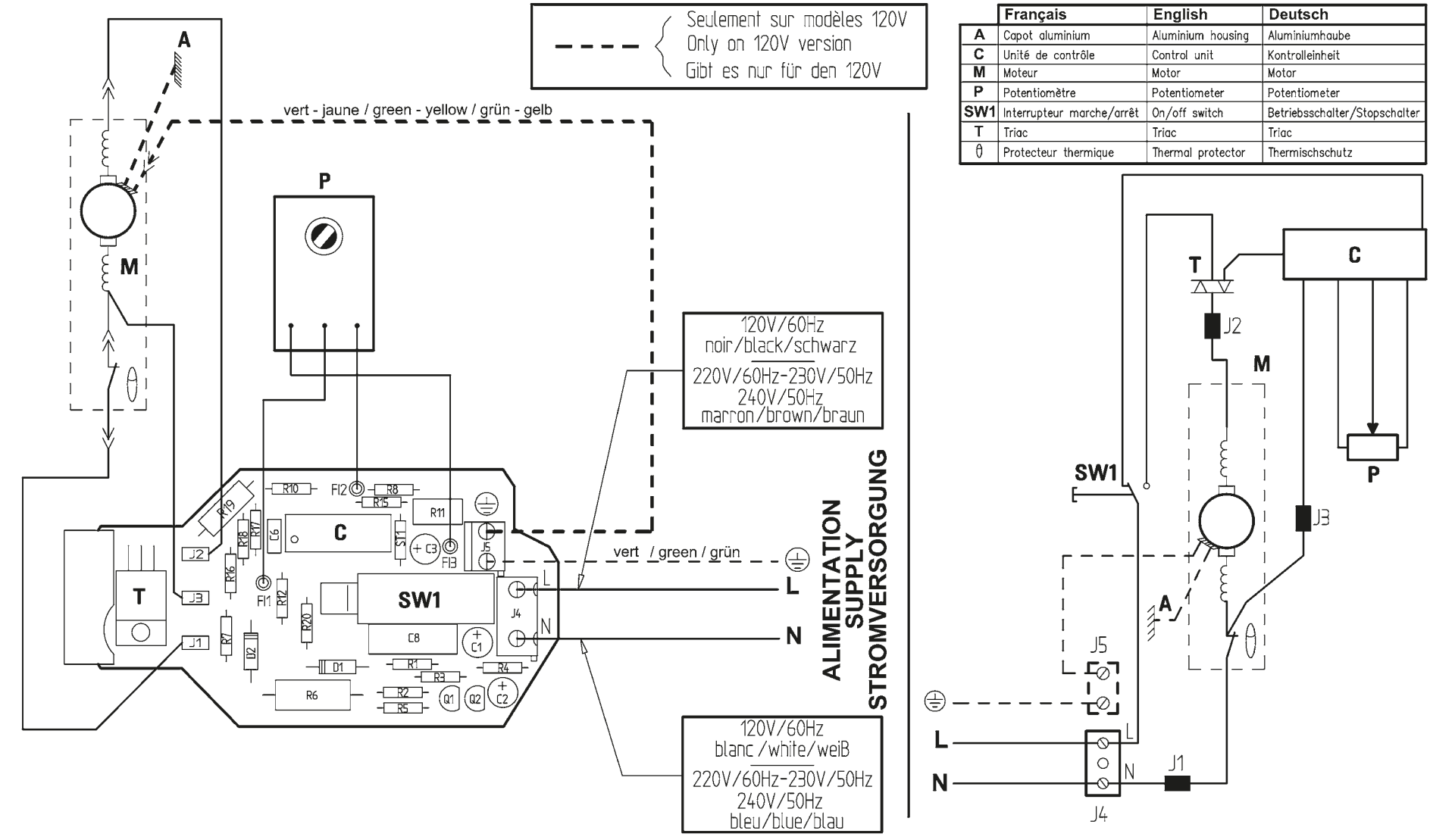
# CMP250 V.V. - CMP300 V.V. - CMP350 V.V. - CMP400 V.V. - CMP250 Combi - CMP300 Combi

120V/60Hz - 220V/60Hz - 230V/50Hz - 240V/50Hz 1~

SCHEMA ELECTRIQUE

ELECTRIC DIAGRAM

ELEKTRISCHES SCHALTBIKD





**robot coupe**®

**Head Office, French,  
Export and Marketing Department:**  
48, rue des Vignerons  
94305 Vincennes Cedex- France  
Tel.: 01 43 98 88 15 - Fax: 01 43 74 36 26  
Email: international@robot-coupe.com

**Robot Coupe Australia Pty Ltd:**  
Unit 3/43 Herbert St  
Artarmon NSW 2064 Australia  
Tel.: (02) 9478 0300  
Fax (02) 9460 7972  
Email: orders@robotcoupe.com.au

**Robot-Coupe U.K. LTD:**  
Fleming Way, Isleworth,  
Middlesex TW7 6EU  
Tel.: 020 8232 1800  
Fax: 020 8568 4966  
Email: sales@robotcoupe.co.uk