



Expand your menu

Discover our range of unique cooking **accessories** designed specifically for your Merrychef high speed oven.



Expanding your opportunities

www.merrychef.com



Our unique range of accessories for the Merrychef high speed oven have been designed for you to get greater flexibility out of your oven. The accessories can help you expand your menu by allowing you to cook a wider variety of meals. Placing food on liners and trays will help keep the ovens clear from food and grease, significantly reducing cleaning time.

All Merrychef accessories are certified food safe and approved for use in our ovens. They are either made from 100% PTFE or have been specifically coated in a material that reduces or eliminates oven arcing which may occur with unapproved metal accessories.

Our range of brightly coloured cooking trays not only look great, but also allow you to have specific colours for certain foods, i.e. green for vegetarian meals. Made from 100% PTFE, they are easy to wipe clean in-between programmes and are dishwasher compatible.

As the Merrychef range of ovens have different cavity sizes, we have some accessories that are specific to each oven. However, the NEW Signature range will suit most of our ovens and provide you with the broadest range of applications. They are highly durable, long-lasting and dishwasher compatible.

Carefully storing and regularly cleaning your accessories will significantly improve their useful life.



To view the full range go to:

www.merrychef.com/products/accessories



Contents

Merrychef eikon® range

p 4-5

eikon® e1s
and **eikon® e2s**

p 6-7

eikon® e4
and **eikon® e4s**

p 8-9

eikon® e3
and **eikon® e5**

p 10-11

Signature range

The essential molded accessories you should never be without. Ideal for cooking specific foods like poaching eggs, baking cakes and heating soups.



Merrychef eikon® e1s and eikon® e2s



▷ Flat cook plate

H⁵/₃₂ x W12 x D12"

Part no: **DC0322**

Available for e1s only.



▷ Wire rack

H⁵/₆₄ x W12 x D12"

Part no: **DC0327**

Available for e1s only.



▷ Flat cook plate

H¹/₃₂ x W12¹/₈ x D12³/₆₄"

Part no: **PSB3108**

Available for e2s only.

Ovens purchased before January 2019.



▷ Griddled cook plate

H¹/₃₂ x W12¹/₈ x D12³/₆₄"

Part no: **PSB3117**

Available for e2s only.

Ovens purchased before January 2019.



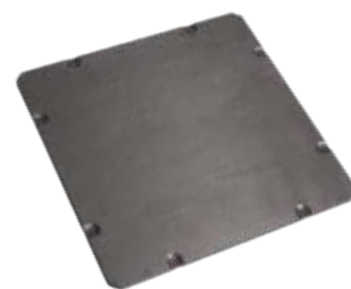
▷ Flat cook plate

H¹/₆₄ x W11¹³/₁₆ x D11¹³/₁₆"

Part no: **DB0739**

Available for e2s only.

Ovens purchased from January 2019.



▷ Griddled cook plate

H¹/₆₄ x W11¹³/₁₆ x D11¹³/₁₆"

Part no: **DB0719**

Available for e2s only.

Ovens purchased from January 2019.



▷ Cool down pan

1/4 size 2⁹/₁₆" deep

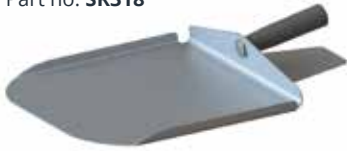
Part no: **32Z4079**



▷ Paddle with hand guard and sides

W11⁴⁷/₆₄ x D11¹³/₁₆"

Part no: **SR318**



▷ Non-stick cooking liner

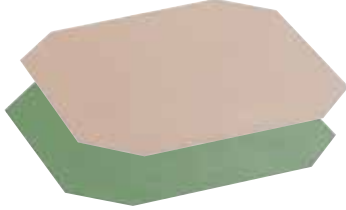
W11⁷/₃₂ x D11⁷/₃₂"

(Natural)

Part no: **32Z4088**

(Green)

Part no: **32Z4096**



▷ Full size cooking tray

H³/₆₄ x W11 x D11"

(Black)

Part no: **32Z4080**

(Red)

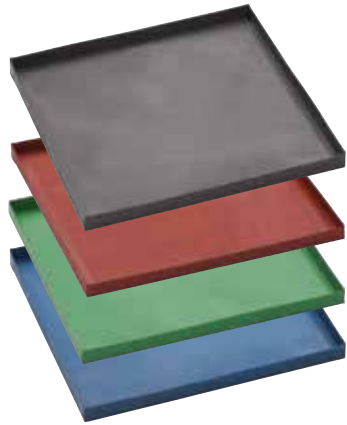
Part no: **32Z4100**

(Green)

Part no: **32Z4093**

(Blue)

Part no: **32Z4101**



▷ Half size cooking tray

H³/₆₄ x W11 x D5³/₆₄"

(Black)

Part no: **32Z4090**

(Green)

Part no: **32Z4094**



▷ Half size deeper cooking tray

H1 x W11 x D7¹/₆₄"

(Red)

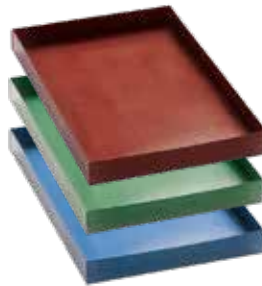
Part no: **32Z4097**

(Green)

Part no: **32Z4098**

(Blue)

Part no: **32Z4099**



▷ Full size mesh cooking tray

H³/₆₄ x W11 x D11"

(Black) Part no: **32Z4081**



▷ Quarter size cooking tray

H³/₆₄ x W5³/₆₄ x D5³/₆₄"

(Black)

Part no: **32Z4089**

(Red)

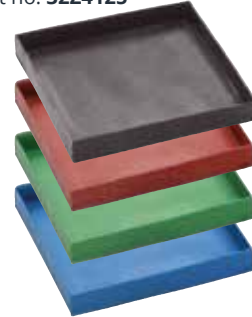
Part no: **32Z4123**

(Green)

Part no: **32Z4095**

(Blue)

Part no: **32Z4125**



▷ Moveable oven trolley

H42²⁹/₃₂ x W18¹⁵/₃₂ x D25³/₆₄"

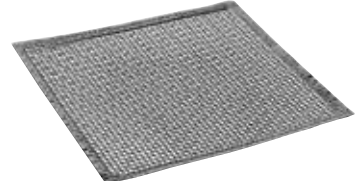
Part no: **SR325**



▷ Mesh liner

H¹/₈ x W12 x D12"

(Black) Part no: **P80011**



▷ Rear oven panel for added aesthetics

H2 x W23¹⁷/₆₄ x D14"

(Black)

Part no: **PSB248**

(Red)

Part no: **PSB247**

(Stainless steel)

Part no: **PSB272**

Available for e2s only.

Merrychef eikon® e4 and eikon® e4s



▷ Paddle with hand guard and sides

W12²⁹/₃₂" x D12¹/₄"

Part no: **SR320**



▷ Paddle without sides

W12²⁹/₃₂" x D12¹/₄"

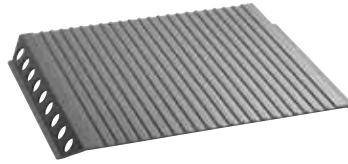
Part no: **SR310**



▷ Gridded cook plate

H1¹/₃₂" x W14¹⁷/₃₂" x D12¹/₆₄"

Part no: **DV0860**



▷ Anodized aluminium baking/roasting tray

H1 x W13 x D9¹/₂"

Part no: **H5220**



▷ Tray handle for use with H5220

H1 x W10²⁵/₆₄" x D3³⁷/₆₄"

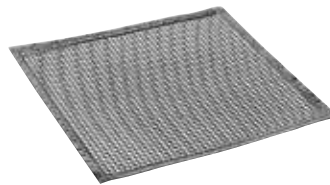
Part no: **SR313**



▶ Mesh liner

H1¹/₈" x W12 x D12"

(Black) Part no: **P80011**



▶ Moveable oven trolley

H36 x W30 x D24"

Part no: **STACK-36**



▷ Non-stick baking/roasting tray

H1⁹/₃₂" x W11¹³/₁₆" x D10⁴³/₆₄"

Part no: **40H0230**



▷ Non-stick roasting tray liner

W10²⁹/₃₂" x D9¹⁹/₆₄"

Part no: **DX0254**



▷ Cool down pan

Half size 4" deep

Part no: **32Z4028**



▶ Moveable oven trolley

H see below x W25 x D26"

The bottom shelf may be adjusted to be 21¹/₂", 20¹/₄", or 19" above the ground, while the top shelf may also be adjusted to be 48¹/₄", 47", or 45³/₄" above the ground. Each shelf is 25" wide.

Part no: **STACK-48**



▶ Moveable oven trolley

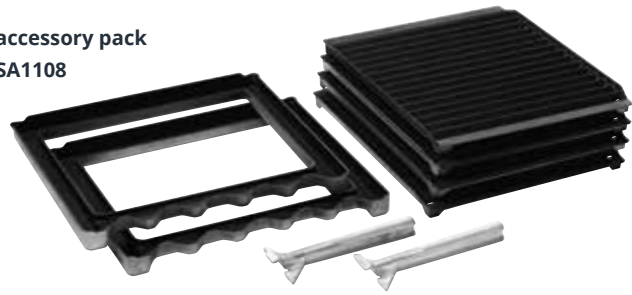
H19 x W30 x D24"

Part no: **STACK-19**



**Merrychef
eikon® e4
only**

▷ **Gridded accessory pack**
Part no: **PSA1108**



▷ **Tray handle for use with PSA1108**
H1 x W9²⁷/₃₂ x D3"
Part no: **DV0344**



▷ **Flat cook plate**
H1¹/₃₂ x W14¹⁷/₃₂ x D12¹/₆₄"
Part no: **PSA1248**



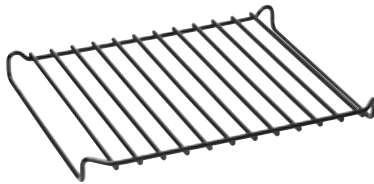
▷ **4x cook plates ideal for grilling and higher protein food**
H1 x W13⁵/₈ x D11"
Part no: **PSA299**



▷ **Frame for PSA299 to catch grease**
H1³/₁₆ x W13²⁵/₆₄ x D11²¹/₃₂"
Part no: **DV0343**



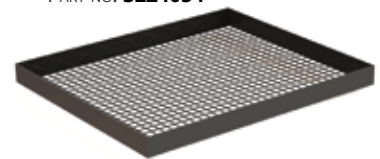
▷ **Wire rack**
H1¹⁷/₆₄ x W14¹/₄ x D11²⁷/₆₄"
Part no: **PDV0907**



▷ **Solid base tray full size**
H1 x W14¹/₆₄ x D12¹/₆₄"
(Black)
Part no: **32Z4070**



▷ **MESH TRAY FULL SIZE**
H1 x W13¹/₂ x D11¹/₂"
(Black)
PART NO: **32Z4054**



**Merrychef
eikon® e4s
only**

▷ **Flat cook plate**
H1 x W14³⁹/₆₄ x D14"
Part no: **DV0870**



▷ **Cook plate ideal for pizzas**
H⁵/₈ x W14³⁹/₆₄ x D14"
Part no: **DV0880**



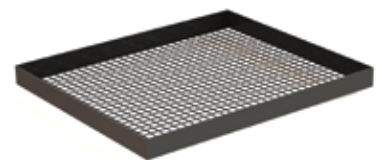
▷ **Wire rack**
H1²⁷/₆₄ x W14¹³/₃₂ x D13³⁵/₆₄"
Part no: **PDV0908**



▷ **Solid base tray full size**
H1 x W13¹/₂ x D13¹/₂"
(Black)
Part no: **32Z4086**



▷ **Mesh tray full size**
H1 x W13¹/₂ x D11¹/₂"
(Black)
Part no: **32Z4054**



Merrychef eikon® e3



▷ Turn-table disk for use with 40H0347

Ø 7³³/₆₄ "

Part no: 40H0249



▷ Flat turn-table plate

H1³⁷/₆₄ x Ø 12⁹/₃₂ "

Part no: 40H0347



▷ Griddled insert for turn-table plate

H1 x Ø 12⁹/₃₂ "

Part no: 40H0240



▷ Non-stick cooking liner

Ø 11¹⁹/₆₄ "

(Natural) Part no: 40H0190



▷ Cool down pan

Sixth size 5²⁹/₃₂ " deep

Part no: 32Z4043



▷ Moveable oven trolley

H see below x W25 x D26"

The bottom shelf may be adjusted to be 21¹/₂", 20¹/₄", or 19" above the ground, while the top shelf may also be adjusted to be 48¹/₄", 47", or 45³/₄" above the ground. Each shelf is 25" wide.

Part no: STACK-48



▷ Tray handle is compatible with 40H0347 and H5220

H1 x W10²⁵/₆₄ x D3³⁷/₆₄ "

Part no: SR313



▷ Non-stick tray ideal for baking/roasting

H1⁹/₃₂ x W11¹³/₁₆ x D10⁴³/₆₄ "

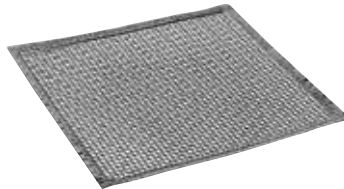
Part no: 40H0230



▷ Mesh liner

H1¹/₈ x W12 x D12"

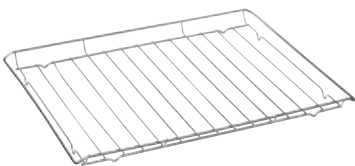
(Black) Part no: P80011



▷ Wire rack

H1³/₁₆ x W12²³/₃₂ x D12⁵¹/₆₄ "

Part no: DR0056



▷ Non-stick roasting tray liner

W10²⁹/₃₂ x D9¹⁹/₆₄ "

Part no: DX0254



▷ Moveable oven trolley

H36 x W30 x D24"

Part no: STACK-36



▷ Moveable oven trolley

H19 x W30 x D24"

Part no: STACK-19



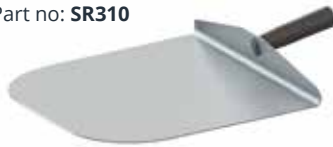
Merrychef
eikon® e5



▷ Paddle without sides

W12²⁹/₃₂ x D12¹/₄"

Part no: **SR310**



▷ Tray handle for use with
P40C1423/P40C1151/P40C1157

H1 x W10²⁵/₆₄ x D3³⁷/₆₄"

Part no: **SR313**



▷ Paddle with hand guard and sides

W12²⁹/₃₂ x D12¹/₄"

Part no: **SR320**



▷ Half sheet pan

H1 x W18 x D13"

Part no: **5303**



▷ Cool down pan

Half size 4" deep

Part no: **32Z4028**



▷ Half sheet pan perforated

H1 x W18 x D13"

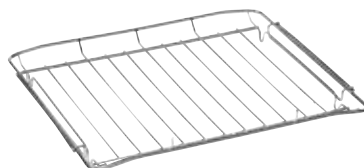
Part no: **5303P**



▷ Wire rack

H1¹⁷/₆₄ x W17¹/₈ x D13⁵/₆₄"

Part no: **DR0057**



▷ Non-stick roasting tray liner

W15²³/₆₄ x D11³⁹/₆₄"

Part no: **40C1218**



Signature range

The **NEW** Signature range will suit most of our ovens to provide you with the broadest range of applications and are highly durable, long-lasting and dishwasher compatible.



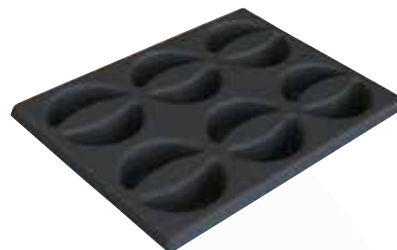
- ▷ **Small bowl**
H1¹³/₃₂" x Ø 7³/₃₂"
Part no: **32Z4115**



- ▷ **1/2 ltr container**
H2¹/₂" x W6⁵/₆₄" x D6²⁹/₃₂"
Part no: **32Z4119**



- ▷ **12x dumpling tray**
H1¹/₄" x W11" x D11"
Part no: **32Z4116**
Not suitable for e3.



- ▷ **Tongs**
Part no: **32Z4156**



- ▷ **Spatula**
H4" x W3⁷/₆₄" x D11¹³/₁₆"
Part no: **32Z4034**



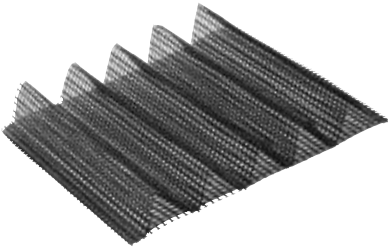
▷ **2x non-stick mold**
 $H^{5\frac{1}{32}}$ x $W11\frac{1}{2}$ x $D11\frac{1}{2}$ "
 Part no: **32Z4126**



▷ **12x non-stick mold**
 $H^{5\frac{1}{64}}$ x $W14^{\frac{31}{64}}$ x $D11$ "
 Part no: **32Z4131**
Not suitable for e1s/e2s/e3.



▷ **Air frying tray**
 $H2$ x $W11\frac{1}{2}$ x $D11\frac{1}{2}$ "
(Black) Part no: **32Z4032**
Not suitable for e3.



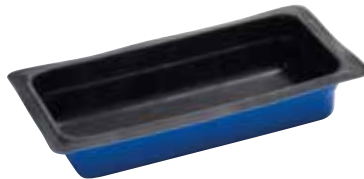
▷ **4x non-stick mold**
 $H^{5\frac{1}{64}}$ x $W10$ x $D10$ "
 Part no: **32Z4113**
Not suitable for e3.



▷ **Small lidded solid tray**
 $H^{\frac{3}{4}}$ x $W11^{\frac{19}{32}}$ x $D11^{\frac{19}{32}}$ "
 Part no: **32Z4134**
Not suitable for e3.



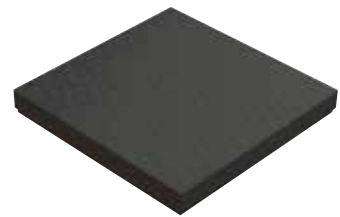
▷ **1 ltr container**
 $H2\frac{1}{2}$ x $W12^{\frac{51}{64}}$ x $D6^{\frac{29}{32}}$ "
 Part no: **32Z4118**
Not suitable for e1s/e2s/e3.



▷ **9x non-stick mold**
 $H^{5\frac{1}{64}}$ x $W11$ x $D11$ "
 Part no: **32Z4132**
Not suitable for e3.



▷ **Large lidded solid tray**
 $H1^{\frac{3}{8}}$ x $W14^{\frac{3}{32}}$ x $D12^{\frac{3}{32}}$ "
 Part no: **32Z4133**
Not suitable for e1s/e2s/e3.



▷ **Large cook tray**
 $H^{\frac{29}{32}}$ x $W14$ x $D11^{\frac{3}{4}}$ "
 Part no: **32Z4128**
Not suitable for e1s/e2s/e3.



▷ **Oven cleaner**
 6 x 32 fl oz (1box)
 Part no: **32Z4144**



▷ **Oven protector**
 6 x 32 fl oz (1box)
 Part no: **32Z4145**

Merrychef oven cleaner and protector

Your Merrychef oven should be cleaned every day to maintain and keep it running smoothly. Our specially formulated cleaner is nonabrasive and if used regularly, will quickly cut through any grease or food debris built up on your Merrychef oven.

After cleaning we recommend you thinly coat your oven with the Merrychef oven protector to provide a barrier against further build-up of grease and make regular cleaning quicker and easier.

ALL Merrychef accessories are:

- ✔ Made from compatible materials for high speed ovens, either 100% PTFE or specifically coated in a material that reduces or eliminates oven arcing which may occur with unapproved metal accessories.
- ✔ Easy to wipe clean in-between programmes and dishwasher safe.
- ✔ Durable and long lasting.

Do's and Don'ts:

- ✔ **Do** use approved Merrychef accessories in your oven which have all been safety tested.
- ✔ **Do** Cook food on an accessory or oven liner and not directly on the cook plate to avoid the build-up of grease and food in your oven.
- ✔ **Do** wipe clean the accessories after every use to avoid any cross contamination, using coloured trays for specific foods, where available.
- ✘ **Don't** use unapproved accessories with your Merrychef oven, they may cause damage and **will invalidate your warranty**, particularly if they are uncoated metal.
- ✘ **Don't** use the cool pans that are provided with Merrychef ovens to cook with. They have been designed to hold ice to speed up the cooling down process prior to cleaning your oven.

Merrychef accessories can be purchased from your local dealer, or to find a supplier go to:
www.merrychef.com/Sales/Sales-Locators#Rep-Locator



Welbilt offers fully-integrated kitchen systems and our products are backed by KitchenCare® aftermarket parts and service. Welbilt's portfolio of award-winning brands includes Cleveland™, Convotherm®, Crem®, Delfield®, fitkitchenSM, Frymaster®, Garland®, Kolpak®, Lincoln™, Manitowoc®, Merco®, Merrychef® and Multiplex®.

Bringing innovation to the table • welbilt.com