



Chilled Drinks Dispenser

Instruction manual



| | | |
|----|---|----|
| EN | Chilled Drinks Dispenser | 2 |
| | <u>Handleiding</u> | |
| NL | Gekoelde drankdispenser | 8 |
| | <u>Handleiding</u> | |
| FR | Distributeur de boissons réfrigérées | 14 |
| | <u>Mode d'emploi</u> | |
| DE | Dispenser für gekühlte Softgetränke | 20 |
| | <u>Bedienungsanleitung</u> | |
| IT | Erogatore di bevande fredde | 26 |
| | <u>Manuale di istruzioni</u> | |
| ES | Dispensador de bebidas frías | 32 |
| | <u>Manual de instrucciones</u> | |

Model • Modèle • Modell • Modello • Modelo • Malli:
CF760 / CF761 / GG753

Safety Instructions

- Position on a flat, stable surface.
- Install the appliance where it can be overseen by trained personnel.
- Always carry, store and handle the appliance in a vertical position.
- A service agent/qualified technician should carry out installation and any repairs if required. Do not remove any components or service panels on this product.
- Consult Local and National Standards to comply with the following:
 - Health and Safety at Work Legislation
 - BS EN Codes of Practice
 - Fire Precautions
 - IEE Wiring Regulations
 - Building Regulations
- DO NOT immerse in water, or use jet/pressure washers to clean the appliance.
- Not suitable for outdoor use.
- Always switch off and disconnect the power supply to the appliance before cleaning.
- This appliance is not intended for use by persons (including children) with reduced physical, sensory or mental capabilities, or lack of experience and knowledge, unless they have been given supervision or instruction concerning the use of the appliance by a person responsible for their safety.
- Keep all packaging away from children. Dispose of the packaging in accordance to the regulations of local authorities.
- Polar recommend that this appliance should be periodically tested (at least annually) by a Competent Person. Testing should include, but not be limited to: Visual Inspection, Polarity Test, Earth Continuity, Insulation Continuity and Functional Testing.

- If the power cord is damaged, it must be replaced by a POLAR agent or a recommended qualified technician in order to avoid a hazard.
- POLAR recommend that this product is connected to a circuit protected by an appropriate RCD (Residual Current Device).

Caution: Risk of Fire



- Do not store explosive substances such as aerosol cans with a flammable propellant in this appliance.



Warning: Keep all ventilation openings clear of obstruction. Unit should not be boxed in without adequate ventilation.

- **Warning:** Do not use mechanical devices or other means to accelerate the defrosting process, other than those recommended by the manufacturer.
- **Warning:** Do not damage the refrigerant circuit.
- **Warning:** Do not use electrical appliances inside the food storage compartments of the appliance.

Product Description

CF760 - Single Chilled Drinks Dispenser

CF761 - Double Chilled Drinks Dispenser

GG753 - Triple Tank Chilled Drinks Dispenser

Introduction

Please take a few moments to carefully read through this manual. Correct maintenance and operation of this machine will provide the best possible performance from your POLAR product.

Pack Contents

The following is included:

- Polar Chilled Drinks Dispenser
- Tank, tank Gasket & Lid (CF760 x 1, CF761 x 2, GG753 x 3)
- Tap Assembly (CF760 x 1, CF761 x 2, GG753 x 3)
- Spare Tank Gasket and O-ring (CF760 x 1, CF761 x 2, GG753 x 3)
- Instruction Manual
- Mixing Paddle (CF760 x 1, CF761 x 2, GG753 x 3)
- Drip Tray (CF760 x 1, CF761 x 2, GG753 x 3)

POLAR prides itself on quality and service, ensuring that at the time of unpacking the contents are supplied fully functional and free of damage.

Should you find any damage as a result of transit, please contact your POLAR dealer immediately.

Installation

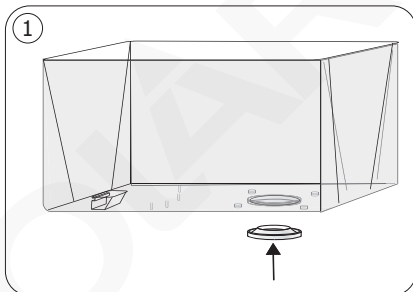
Note: Not for use in vans or trailers, food trucks or similar vehicles.

If the unit has not been stored or moved in an upright position, let it stand upright for approximately 12 hours before operation. If in doubt allow to stand.

1. Remove the appliance from the packaging and remove the protective film from all surfaces.
2. When positioning the dispenser, maintain a distance of 20cm (7 inches) between the appliance and walls or other objects for ventilation. Increase this distance if the obstacle is a heat source.
3. If necessary, adjust the screw legs of the dispenser to stabilise it.

Assembly/Disassembly

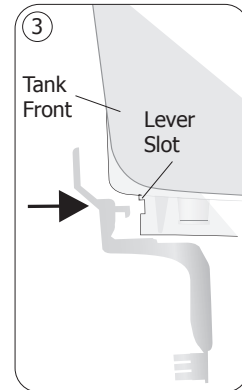
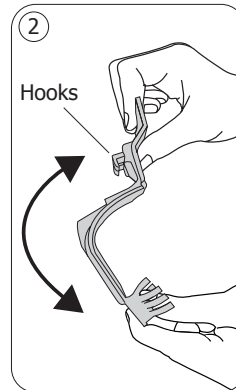
1. Insert the large rubber gasket into the bottom of the tank [Fig. 1].



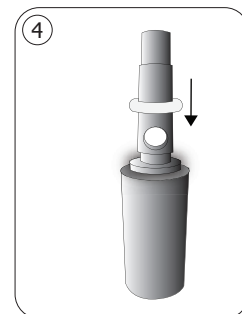
2. Holding the top and bottom of the tap lever, gently bend the lever in the middle [Fig. 2].
3. Push the two hooks at the back of the tap lever into the slot in the front of the tank and drop into place [Fig. 3].
4. Lower the tank on to the cooling column. Locate the four feet on the bottom of the tank to the mounts on top of the cooling unit.



Note: Lubricate the gasket with a small amount of water if the gasket is too tight.



5. Roll the O-ring down the tap shaft [Fig. 4] and insert thin end first into the hole in the tank.
6. Ensure the bottom of the tap slots into the gap in the tap lever.



7. Hang the drip tray from the slots on the front of dispenser [Fig. 5].



8. Securely fix the lid to the tank.

Operation

Filling

1. Switch Off the dispenser.
2. Remove the lid and pour the liquid into the tank.
3. Replace the lid.



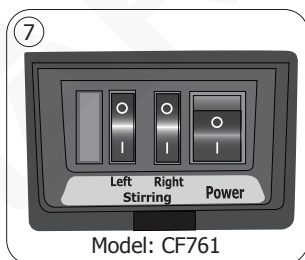
WARNING: Do not fill the tank with hot liquid. Do not let the level exceed the 'MAX' level line displayed on the front of the tank.



Note: CF761/GG753 Only - If only one tank is to be filled, it must be the left tank. To use left tank only, you just need to switch left stirring switch ON (I position). Meanwhile, the right tank does not chill and the paddle does not run.

Using the Dispenser

1. Turn On the Power switch on the side of the dispenser.
2. Switch the stirring switch to the 'On' position [I].
3. Once the liquid is sufficiently cooled, push the receptacle against the tap lever to dispense the liquid.



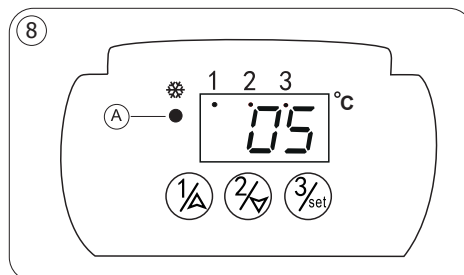
Note: Should the paddle encounter any resistance in the liquid, it will reverse direction.

Adjusting the Beverage tank temperature

To adjust the temperature of beverage tank(s), lift up the plastic cover(s).

As CF761/GG753 has more than one tank, Tank 1 is the one on the left hand side of the unit when looking from the front.

1. Turn on the main switch on the right hand of the unit. The power indicator light (A) illuminates on the controller.



2. To set the temperature of Tank 1, press $\frac{1}{A}$ button twice. The indicator light (1) on the top will illuminate and the current temperature will flash. Press the arrow buttons ($\frac{1}{A}$, $\frac{2}{A}$) to set the desired temperature. Then press $\frac{3}{set}$ button to confirm. (Temp range: 0°C - 10°C)
3. Repeat above operations to set the temperature of tank 2/3, if desired (for CF761/GG753).
4. During use, the unit will automatically display the actual temperature of the tank for 2 seconds, with the corresponding tank indicator light illuminating.
5. To switch off the cooling of a certain tank, press the corresponding tank button for 3 seconds. "OFF" will be displayed. To switch on cooling, press and hold the tank button again.

Emptying the Dispenser

Drain the dispenser by using the tap lever(s) to empty the tank(s).



Note: Do not drain the dispenser by tipping the appliance.

Cleaning, Care & Maintenance

- **Switch off and disconnect from the power supply before cleaning.**
- Warm, soapy water is recommended for cleaning. Cleaning agents may leave harmful residues. DO NOT wash the base unit, instead wipe the exterior with a damp cloth.
- Empty and clean the drip trays regularly.
- Unit should be de-scaled regularly. Note that scale may cause premature failure of the machine and it could invalidate your warranty.

Cleaning the Condenser

POLAR recommend the condenser is cleaned at least once a month.



Note: The condenser is the black (CF760) or silver (CF761/GG753) metal grid behind the side panel.

To clean the condenser:

1. Unscrew the two screws from beneath the Temperature controller side panel.
2. Lift the side panel up and over Temperature controller to remove.
3. Clean the condenser with a soft cloth or brush.



WARNING: Take care when cleaning the condenser; sharp edges may cut.

4. Replace the panel and two screws.

Troubleshooting

A qualified technician must carry out repairs if required.

| Fault | Probable Cause | Solution |
|------------------------------------|-------------------------------------|--|
| The appliance is not working | The unit is not switched on | Check the unit is plugged in correctly and switched on |
| | Plug or power cord is damaged | Replace plug or lead |
| | Fuse in the plug has blown | Replace the fuse |
| | Mains power supply fault | Check mains power supply |
| The dispenser is not cooling | Coolant leak | Consult a qualified technician |
| | Fan motor failed | Consult a qualified technician |
| | Airflow obstructed to the condenser | Increase the gap between appliance and obstacles/heat source |
| | Condenser is clogged | Remove side panels and clean condenser |
| The mixing paddles are not working | Mixing motor has failed | Consult a qualified technician |
| The tank is leaking | Gasket problem | Check the gaskets and replace if necessary |

Technical Specifications

Note: Due to our continuing program of research and development, the specifications herein may be subject to change without notice.

| Model | Voltage | Power (W) | Current (A) | Tanks | Capacity (litres) | Refrigerant | Dimensions H x W x D mm | Weight (kg) |
|--------------|----------------|-----------|-------------|-------|-------------------|-------------|-------------------------|-------------|
| CF760 | 220-240V~ 50Hz | 290W | 1.9A | 1 | 12 | R290 | 635 x 220 x 450 | 20 |
| CF761 | 220-240V~ 50Hz | 370W | 2.2A | 2 | 24 | R290 | 635 x 420 x 450 | 28 |
| GG753 | 220-240V~ 50Hz | 450W | 2.55A | 3 | 36 | R290 | 635 x 650 x 450 | 36 |

Electrical Wiring

POLAR appliances are supplied with a 3 pin BS1363 plug and lead.

The plug is to be connected to a suitable mains socket.

POLAR appliances are wired as follows:

- Live wire (coloured brown) to terminal marked L
- Neutral wire (coloured blue) to terminal marked N
- Earth wire (coloured green/yellow) to terminal marked E

This appliances must be earthed.

If in doubt consult a qualified electrician.

Electrical isolation points must be kept clear of any obstructions. In the event of any emergency disconnection being required they must be readily accessible.



Disposal

EU regulations require refrigeration product to be disposed of by specialist companies who remove or recycle all gasses, metal and plastic components.

Consult your local waste collection authority regarding disposal of your appliance. Local authorities are not obliged to dispose of commercial refrigeration equipment but may be able to offer advice on how to dispose of the equipment locally.

Alternatively call the POLAR helpline for details of national disposal companies within the EU.

Compliance

The WEEE logo on this product or its documentation indicates that the product must not be disposed of as household waste. To help prevent possible harm to human health and/or the environment, the product must be disposed of in an approved and environmentally safe recycling process. For further information on how to dispose of this product correctly, contact the product supplier, or the local authority responsible for waste disposal in your area.



POLAR parts have undergone strict product testing in order to comply with regulatory standards and specifications set by international, independent, and federal authorities.

POLAR products have been approved to carry the following symbol:



All rights reserved. No part of these instructions may be produced or transmitted in any form or by any means, electronic, mechanical, photocopying, recording or otherwise, without the prior written permission of POLAR.

Every effort is made to ensure all details are correct at the time of going to press, however, POLAR reserve the right to change specifications without notice.

DECLARATION OF CONFORMITY

- Conformiteitsverklaring • Déclaration de conformité • Konformitätserklärung • Dichiarazione di conformità •
• Declaración de conformidad

| | |
|---|--|
| Equipment Type • Uitrustingstype • Type d'équipement • Gerätetyp • Tipo di apparecchiatura • Tipo de equipo | Model • Modèle • Modell • Modello • Modelo |
| G-Series Chilled Drinks Dispenser G-Series Twin Tank Chilled Drinks Dispenser G-Series Triple Tank Chilled Drinks Dispenser | CF760 (-E & -A) CF761 (-E & -A) GG753 (-E & -A) |
| Application of Territory Legislation & Council Directives(s) Toepassing van Europese Richtlijn(en) • Application de la/des directive(s) du Conseil • Anwendbare EU-Richtlinie(n) • Applicazione delle Direttive • Aplicación de la(s) directiva(s) del conasejo | <p>Machinery Directive 2006/42/EC Supply of Machinery (Safety) Regulations 2008 (BS) EN 60335-1:2012 +A11:2014 +A13:2017 +A1:2019 +A14:2019 (BS) EN 60335-2-75:2004 +A1:2005 +A11:2006 +A2:2008 +A12:2010 (BS) EN 62233:2008</p> <p>Electro-Magnetic Compatibility (EMC) Directive 2014/30/EU - recast of 2004/108/EC Electromagnetic Compatibility Regulations 2016 (S.I. 2016/1091) (BS) EN IEC 55014-1:2021 (BS) EN IEC 55014-2:2021 (BS) EN IEC 61000-3-2:2019 +A1:2021 (BS) EN 61000-3-3:2013 +A1:2019 +A2:2021</p> <p>Restriction of Hazardous Substances Directive (RoHS) 2015/863 amending Annex II to Directive 2011/65/EU Restriction of the Use of Certain Hazardous Substances in Electrical and Electronic Equipment Regulations 2012 (S.I. 2012/3032)</p> |
| Producer Name • Naam fabrikant • Nom du producteur • Name des Herstellers • Nome del produttore • Nombre del fabricante | Polar |

I, the undersigned, hereby declare that the equipment specified above conforms to the above Territory Legislation, Directive(s) and Standard(s).

Ik, de ondergetekende, verklaar hierbij dat de hierboven gespecificeerde uitrusting goedgekeurd is volgens de bovenstaande Richtlijn(en) en Standaard(en).

Je soussigné, confirme la conformité de l'équipement cité dans la présente à la / aux Directive(s) et Norme(s) ci-dessus
Ich, der/die Unterzeichnende, erkläre hiermit, dass das oben angegebene Gerät der/den oben angeführten Richtlinie(n) und Norm(en) entspricht.

Il sottoscritto dichiara che l'apparecchiatura di sopra specificata è conforme alle Direttive e agli Standard sopra riportati.
El abajo firmante declara por la presente que el equipo arriba especificado está en conformidad con la(s) directiva(s) y estándar(es) arriba mencionadas.

Date • Data • Date • Datum • Data •
Fecha • Data

Signature • Handtekening •
Signature • Unterschrift Firma •
Firma

Full Name • Volledige naam • Nom
et prénom • Vollständiger Name •
Nome completo • Nombre completo

Position • Functie • Fonction •
Position • Qualifica • Posición

Producer Address • Adres fabrikant •
Adresse du producteur • Anschrift
des Herstellers • Indirizzo del
produttore • Dirección del fabricante

18th January 2023

| | | |
|---|---|---|
| DocuSigned by: <i>Ashley Hooper</i> B39382C9FD9C478... | DocuSigned by: <i>Eoghan Donnellan</i> D352874F7FAB460... | DocuSigned by: <i>Brendan Denmeade</i> D052C5837EB7465... |
| Ashley Hooper | Eoghan Donnellan | Brendan Denmeade |
| Technical & Quality Manager | Commercial Manager/ Importer | Commercial Manager/ Responsible Supplier |
| Fourth Way, Avonmouth, Bristol, BS11 8TB United Kingdom | Unit 9003, Blarney Business Park, Blarney, Co. Cork Ireland | 15 Bagdally Road, Campbelltown NSW 2560 |

